



# Camera Mouse 2016

## User Manual

James Gips  
Boston College

February 21, 2016

## **INTRODUCTION AND WELCOME**

Welcome to the Camera Mouse 2016 user manual!

Camera Mouse is a program that allows you to control the mouse pointer on a Windows computer just by moving your head.

Camera Mouse uses a standard built-in camera or USB webcam to track your head. If you move your head to the left, the mouse pointer moves to the left, and so on. Clicking can be done by “dwell time”. If you hold the mouse pointer within a certain area of the screen for, say, a second a mouse click will be issued by the program.

The purpose of Camera Mouse is to help people with physical disabilities to access the computer. In particular, Camera Mouse has proved very helpful to people who have no voluntary movement below the neck, people who can voluntarily control only their head. People with Cerebral Palsy, traumatic brain injury, ALS, Multiple Sclerosis, and various other disorders have used Camera Mouse to access the computer and internet.

Camera Mouse has been put to many other uses as well.

Camera Mouse is software that is designed to work with your Windows 10, Windows 8.1, Windows 8, Windows 7, Windows Vista, or Windows XP computer and your built-in camera or USB webcam. Camera Mouse is completely free and may be distributed freely.

Copies of Camera Mouse, copies of this manual, information about programs that work well with Camera Mouse, and answers to Frequently Asked Questions can be found at [cameramouse.org](http://cameramouse.org).

## **A LITTLE HISTORY**

Camera Mouse was invented by Prof. James Gips (Boston College) and Prof. Margrit Betke (then at Boston College, now at Boston University). The original version of Camera Mouse was made available to some families of children with disabilities and some schools and facilities on an experimental basis.

The Camera Mouse technology then was licensed by Boston College to Camera Mouse, Inc., a start-up company out of the IC2 Institute at the University of Texas, Austin. Camera Mouse, Inc. developed a commercial version and made it available on their website at [www.cameramouse.com](http://www.cameramouse.com) and through other channels. With the demise of the company the license was revoked by Boston College in April 2007 and all the rights to use the intellectual property given in the license were returned to Boston College.

People continued to inquire about Camera Mouse but no version was available. We decided to develop Camera Mouse 2007 and make it available for free on the web. Camera Mouse 2007 worked well but only with a small group of webcams. Camera Mouse 2008 worked with a much wider variety of webcams. We have continued to make improvements in Camera Mouse. We have

added new features and tracked down and corrected problems and kept up with changes in Windows.

Since the first version of Camera Mouse was made available for free in June 2007, over 3,000,000 copies have been downloaded from cameramouse.org.

It is very difficult to test Camera Mouse with all the combinations of computer hardware, Windows operating systems, and cameras. If you have problems please notify me at [gips@bc.edu](mailto:gips@bc.edu).

## **HARDWARE AND SOFTWARE REQUIREMENTS**

To run Camera Mouse 2016 you will need a computer or tablet with Windows 10, Windows 8.1, Windows 8, Windows 7, Windows Vista, or Windows XP. Camera Mouse does not run on Windows RT.

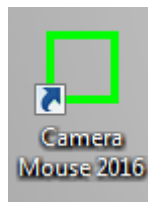
Your computer also needs Microsoft .NET Framework 4.0 or higher. This already is installed on most computers, especially Windows 10 or 8 or 7. If it is not installed on your computer, the Camera Mouse 2016 Installer will give you the option of downloading it from Microsoft. You can download Microsoft .NET Framework 4.0 (for free) at <http://www.microsoft.com/en-us/download/details.aspx?id=24872>. If you don't have .NET Framework 4.0 or higher on your computer and can't download it then you should try Camera Mouse 2013 or Camera Mouse 2011, which use older versions of .NET Framework and also are available on the cameramouse.org site. You can have Camera Mouse 2016, Camera Mouse 2013, and Camera Mouse 2011 all installed on your computer at the same time.

You also will need a built-in camera or a standard USB webcam. We use a Microsoft LifeCam Studio HD or a Logitech HD Pro Webcam C920 for development. Just about any good quality webcam should do, including most built-in webcams. Inexpensive webcams, including some built in to notebook computers or tablets, can produce noisy or muddy images, which Camera Mouse can have a more difficult time tracking.

## **BEFORE USING CAMERA MOUSE**

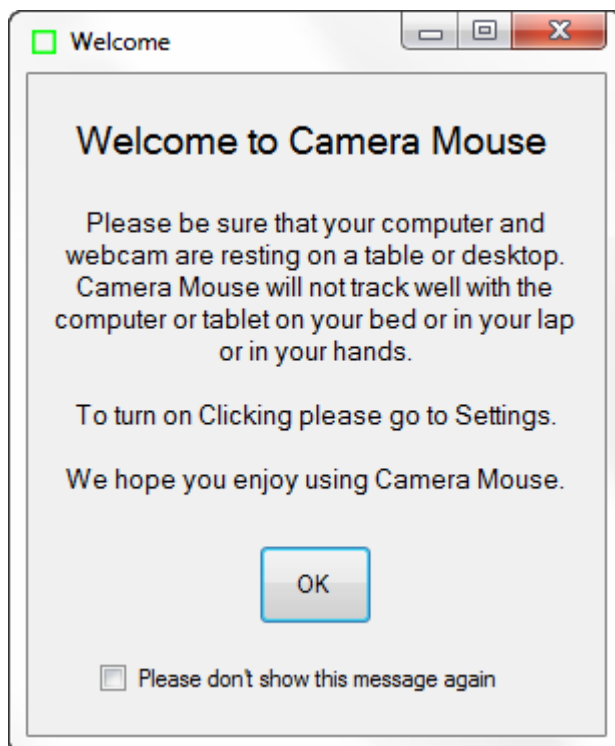
If you are using a USB webcam, before using Camera Mouse you should install the webcam according to the instructions from the manufacturer. Be sure to install the driver software for the webcam that comes with the webcam or the latest driver that is downloaded from the manufacturer's website. Do not try to use a generic Windows camera driver. If you can, test to make sure the webcam works before using Camera Mouse. Place the webcam above or below your monitor so it is pointing at you.

If you are using a notebook computer or tablet be sure it is resting on a table or desktop. Camera Mouse will not function well with the computer or tablet on your bed or in your lap or in your hands.

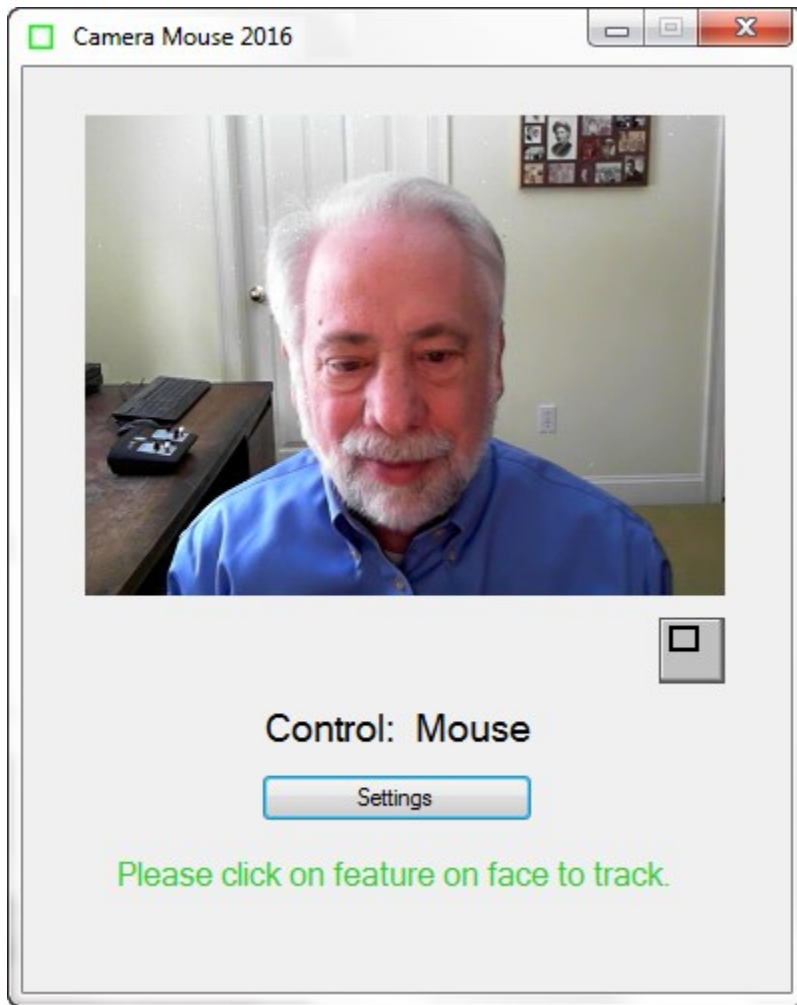


## GETTING STARTED WITH CAMERA MOUSE 2016

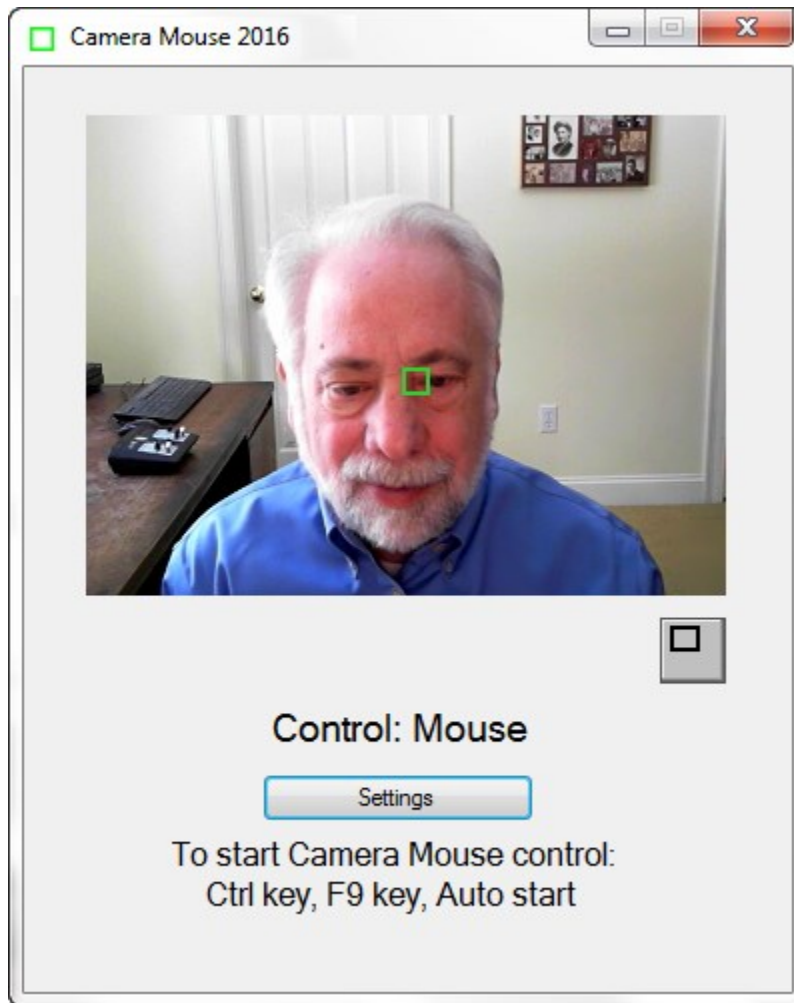
Start up Camera Mouse 2016 by double-clicking on the shortcut icon on your desktop. Initially you should see the following message



On clicking OK you should see a window with a video screen that contains your face, like looking at yourself in the mirror.



Use the mouse to click on a unique feature of your face. We usually use the inside corner of an eyebrow or eye or the ridge below the nose. A green square should appear where you clicked. Move your head around very slowly at first. The green square should track the feature. If by chance it loses the feature, then move the mouse and select a different feature by clicking on it.



Once the feature on your face is being tracked by the computer, just press the Ctrl key or function key F9 or wait 4 seconds (“Auto start”). Now the tracking of your head should control the mouse pointer. As you move your head slowly to the right, the mouse pointer should move to the right. To return back to mouse control you can move the mouse or press the F9 key or the Ctrl key again.

You can tell whether the mouse or the Camera Mouse is in control by looking below your picture in the Camera Mouse window.

Select a target on the screen, perhaps an icon or a feature of the background picture. See if you can move the mouse pointer to the target just by moving your head. If you have difficulty reaching a portion of the screen, physically move the mouse to take back control, click on the Settings button to open up the Camera Mouse Settings window, and change the Gain settings as described below. Practice moving the mouse pointer around the screen with your head until it comes easy.

If you haven’t already, you should download the Aliens and Paint program from the [cameramouse.org](http://cameramouse.org) Downloads page. Also the Staggered Speech onscreen keyboard program from [staggeredspeech.org](http://staggeredspeech.org) and the Midas Touch program from [midastouch.org](http://midastouch.org).

In Camera Mouse, click on a point on your face so it's tracking. Now open up the Aliens program. Try to keep your head steady so Camera Mouse continues to track. Press the Ctrl key or the F9 key or wait 4 seconds. Move your head slowly. The red crosshairs should move with your head. Now still with your head steady press the space bar. The first alien should appear. Move your head so the crosshair is on top of the alien. You should hear and see an explosion as the alien blows up. It's just contact with the center of the crosshair. No need for clicking with Aliens or Paint.

Close Aliens when you are finished. (But take a look at the manual or menus. You can substitute any photo for the Alien.)

With Camera Mouse tracking your head, open up Paint. Same procedure. Press the spacebar and you are painting by moving your head. You can change the colors and shapes in the menus. Press the spacebar to stop at any time. You can print the picture you have created with a dedication.

Slow, deliberate movements with Camera Mouse are better than fast, jerky movements.

## **RECENTERING**

Each time you start up Camera Mouse or switch control to Camera Mouse, the mouse pointer (usually) re-centers. (This can be changed in the Settings window; see below.) So during a session a good way to center the mouse pointer in the screen is to press the Ctrl key or F9 key twice in a row.

## **CHANGING THE FEATURE ON THE FACE THAT IS TRACKED**

At any time you can go into the main Camera Mouse window and use the mouse to click on a new feature on the face to track. If you selected the tip of the nose and the green square is slipping, try the inside corner of the eyebrow or the ridge between the nose and mouth.

## **MINIMIZING THE CAMERA MOUSE WINDOW**

You can minimize the Camera Mouse window by pressing the Minimize button at the top right of the window (the left of the three buttons).



If the Camera Mouse window is minimized, the window will not appear but the Camera Mouse program will continue to run in the background and to track. You can continue to use Camera Mouse to control the mouse pointer while the window is minimized. The Ctrl key and the F9 key and the mouse still will switch control back and forth to Camera Mouse even though the program is minimized.

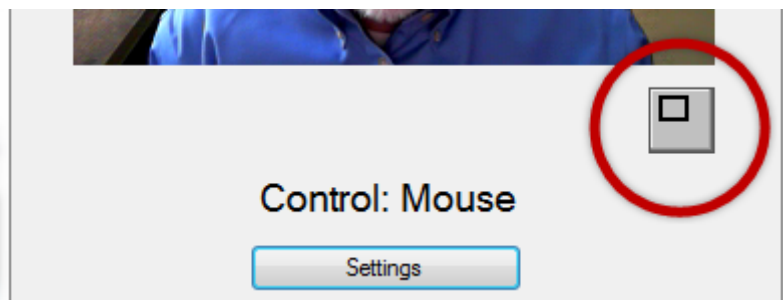
Minimizing the window can be a big help if a child is mesmerized by his or her appearance in the video window or if the Camera Mouse program is distracting the user from the application program.

To bring the Camera Mouse window back from being minimized just click on the Camera Mouse tab (the green square) that should appear at the very bottom of the Windows screen.



## **DISPLAYING THE IMAGE IN A SMALLER WINDOW**

By clicking on the button under the video image in the standard Camera Mouse window



you can have the video displayed in a smaller window.



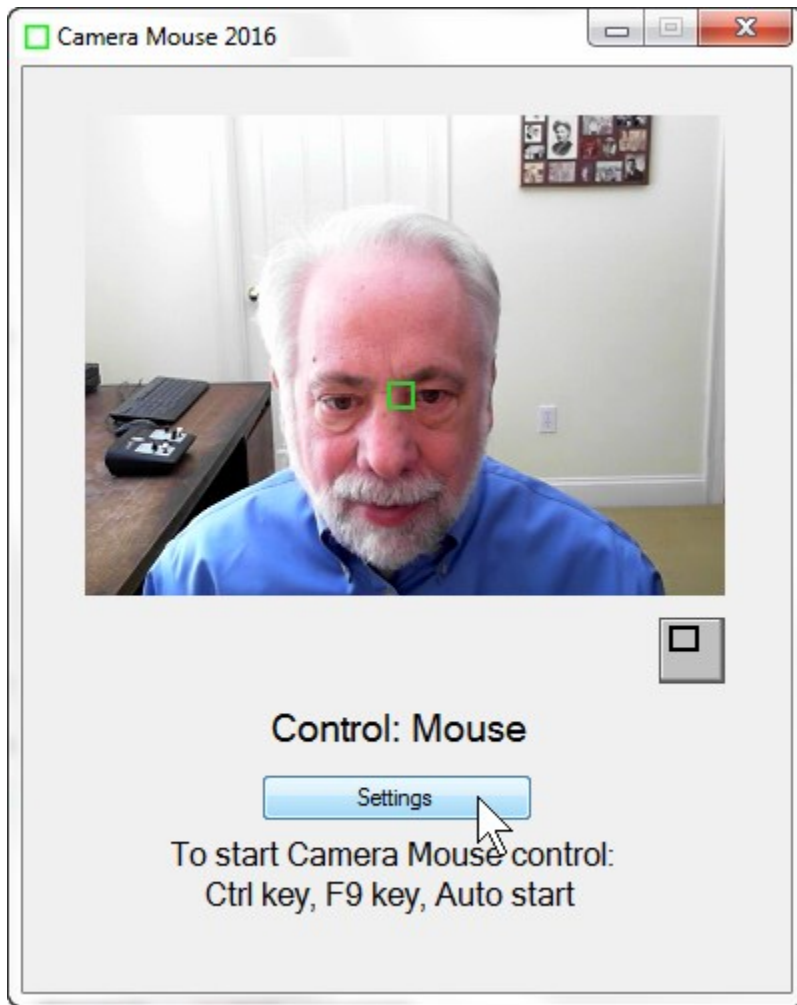


This window will always stay on top of any application on the desktop. This is useful, for example, if you are monitoring the Camera Mouse program while someone else uses it. You can drag the window down to say the bottom right of the screen and look at it now and then to see if the tracking slips. You can still take control with the mouse and click on the smaller video window to reset the tracking. To return the Camera Mouse window to its normal size click on the button below the video image.

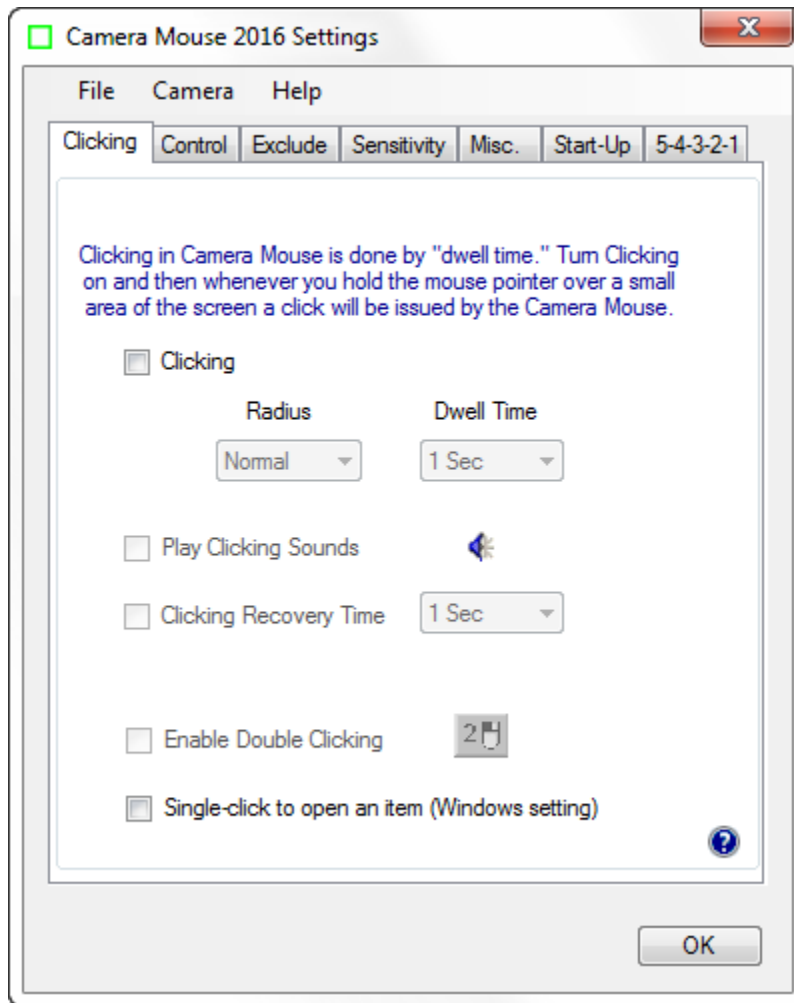


## **CAMERA MOUSE SETTINGS**

Clicking the Settings button in the main Camera Mouse window



brings up the Settings window

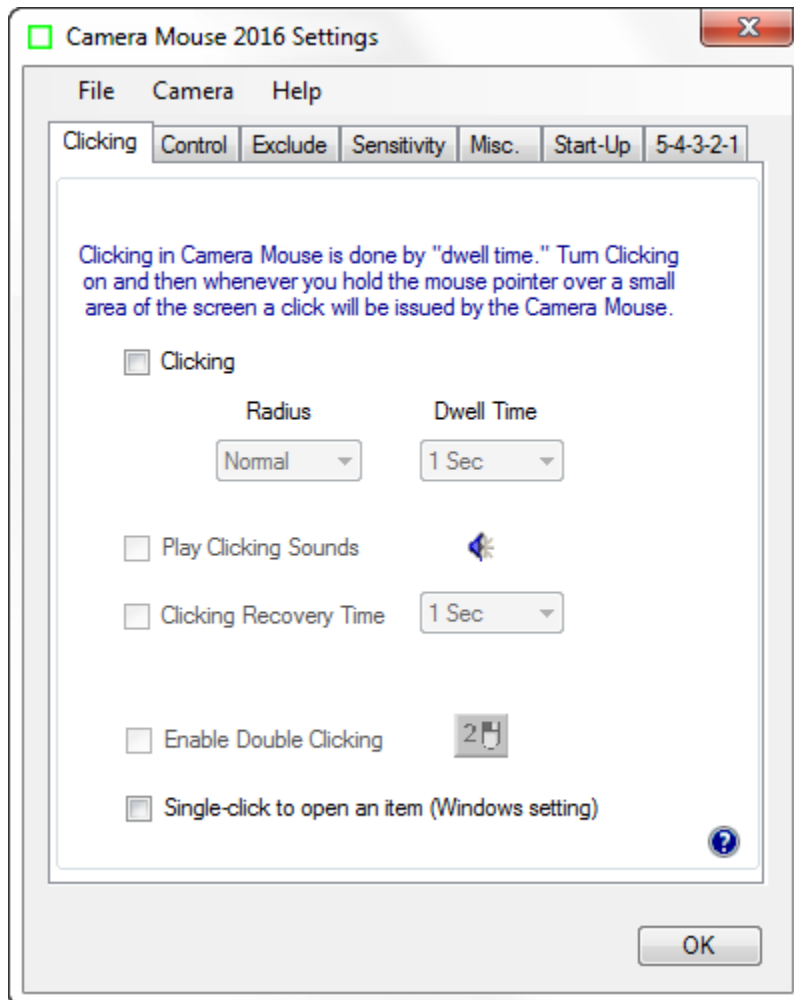


Settings uses a tab based interface with three pull-down menus (File, Camera, Help). Let's go through the various Camera Mouse Settings tabs, starting at the left.

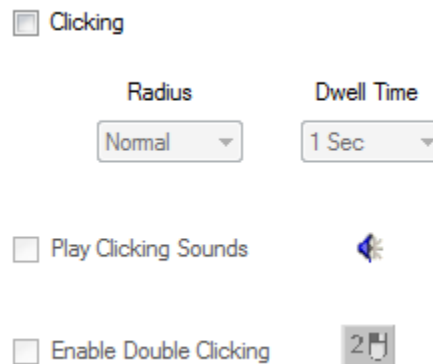
The question mark icon at the bottom right brings up the interactive Help feature for the current tab.



## Clicking tab

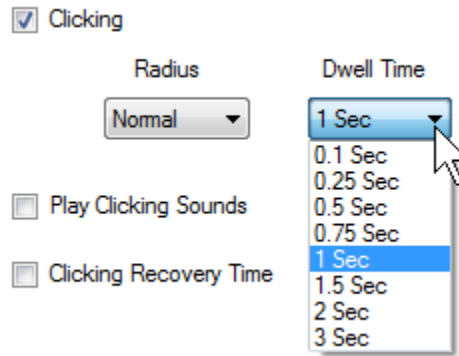


On start up, Clipping generally is off in Camera Mouse.



Clicking in Camera Mouse is done using “Dwell Time”. That means that if you hold the mouse pointer on the screen within a certain small area for a certain period of time then a mouse click will be issued.

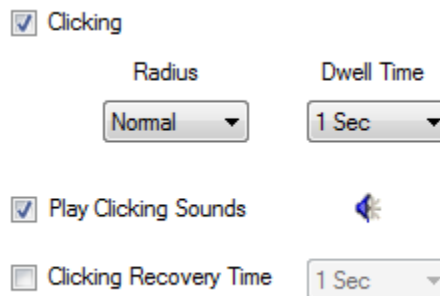
If you turn on Clicking then you can change the Radius of the area and the amount of time during which the mouse pointer must be held in the area (the “Dwell Time”).



A Dwell Time of 0.1 second allows for relatively rapid clicks, as might be useful in a video game. In general, 1 second seems to work well.

## PLAY CLICKING SOUNDS

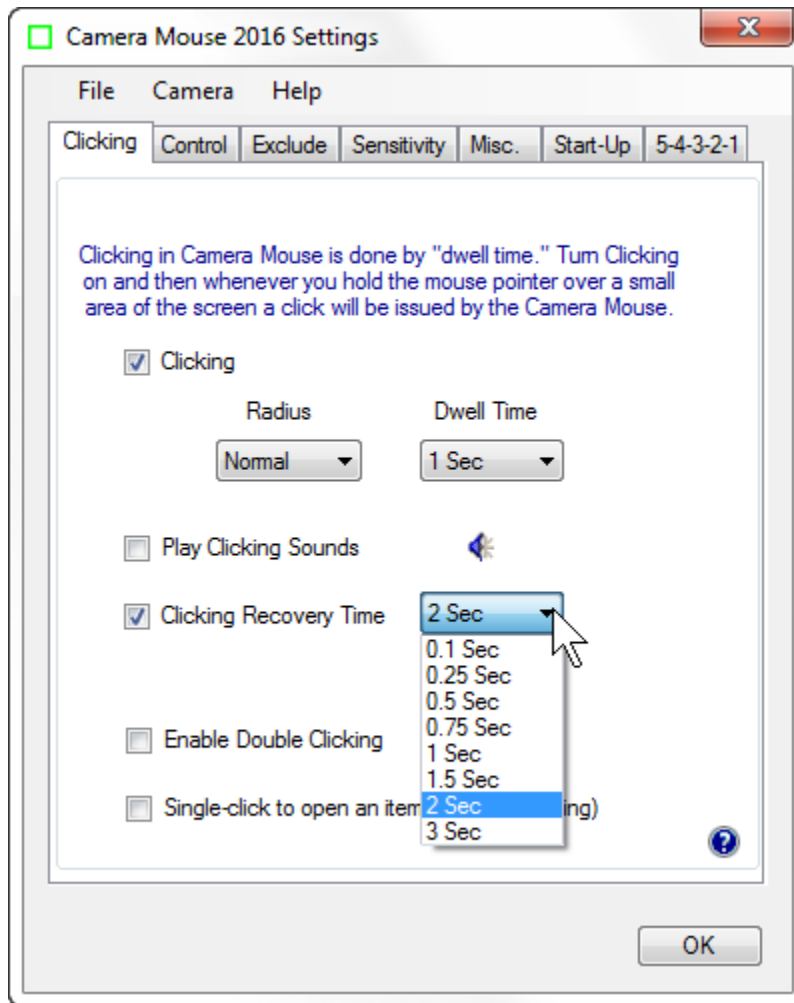
You can have the program alert you with a clicking sound whenever it issues a click by checking Play Clicking Sounds. You can listen to the sound the program would make when a click is issued by clicking on the blue sound icon.



## CLICKING RECOVERY TIME

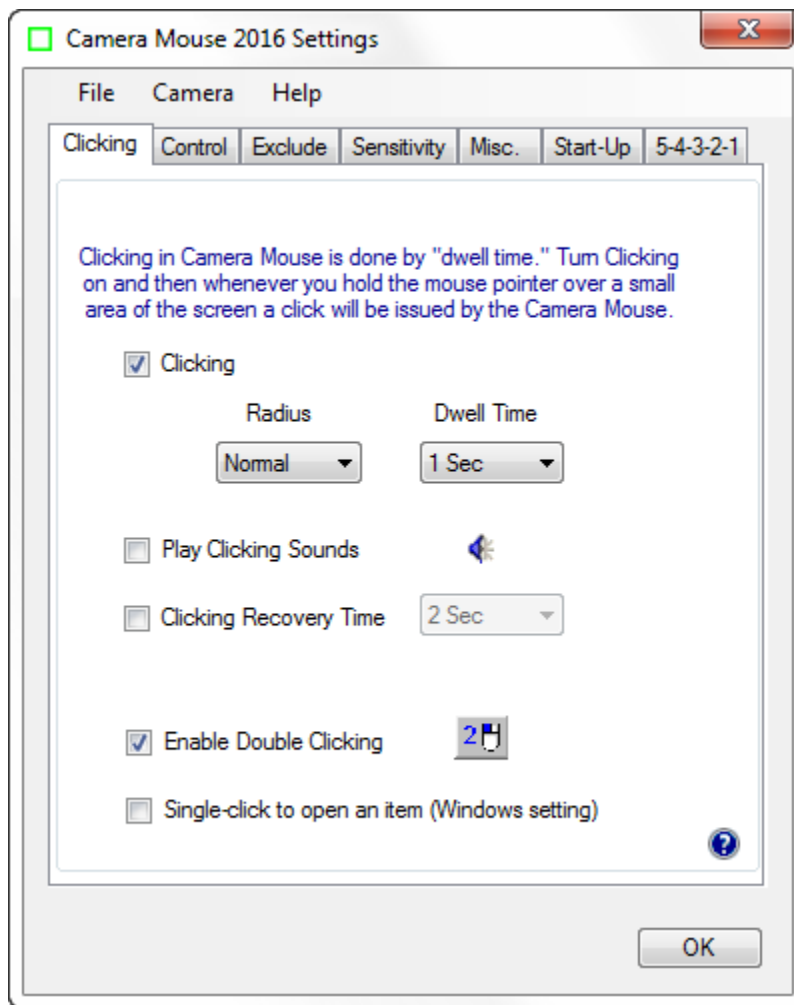
The Clicking Recovery Time provides the opportunity for a delay between a click and the next click.

For example, if Clicking Recovery Time is checked and 2 Seconds is selected, then after each click the Camera Mouse program will wait for 2 seconds before beginning the examination of whether the mouse pointer is dwelling in a small area long enough to cause a click.

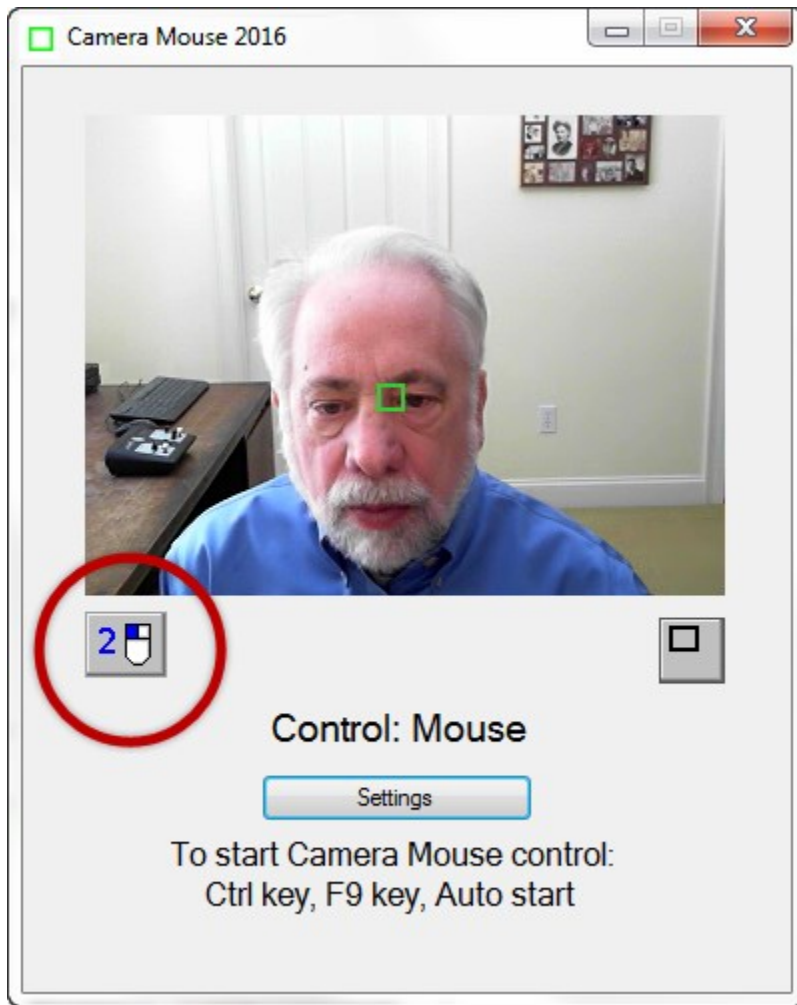


## DOUBLE-CLICKING

Once Clicking is turned on it's possible to Enable Double-Clicking.

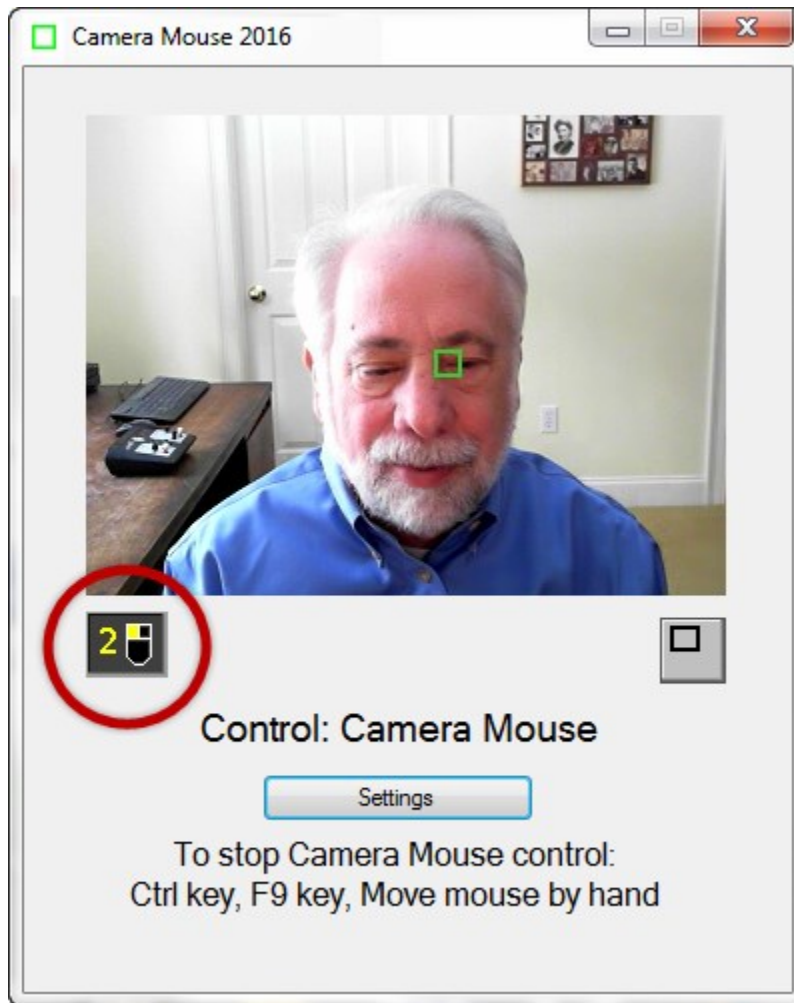


As soon as Enable Double-Clicking is checked a new button appears in the main Camera Mouse window.



If the user clicks on the new “2-click” button then the very next click will be a double-click. So if the user wants to open Paint by double clicking on the Paint icon, the user would first click on the 2-click button. At this point the colors of the 2-click button would be inverted to indicate it is active.





Then the user would use Camera Mouse to move the mouse pointer directly so it dwells over the Paint icon on the desktop, Camera Mouse would double-click (instead of single-clicking), and the Paint program would be opened.

Clicking on the 2-click button tells Camera Mouse that the very next click should be a double-click.

#### SINGLE-CLICK TO OPEN AN ITEM (WINDOWS SETTING)

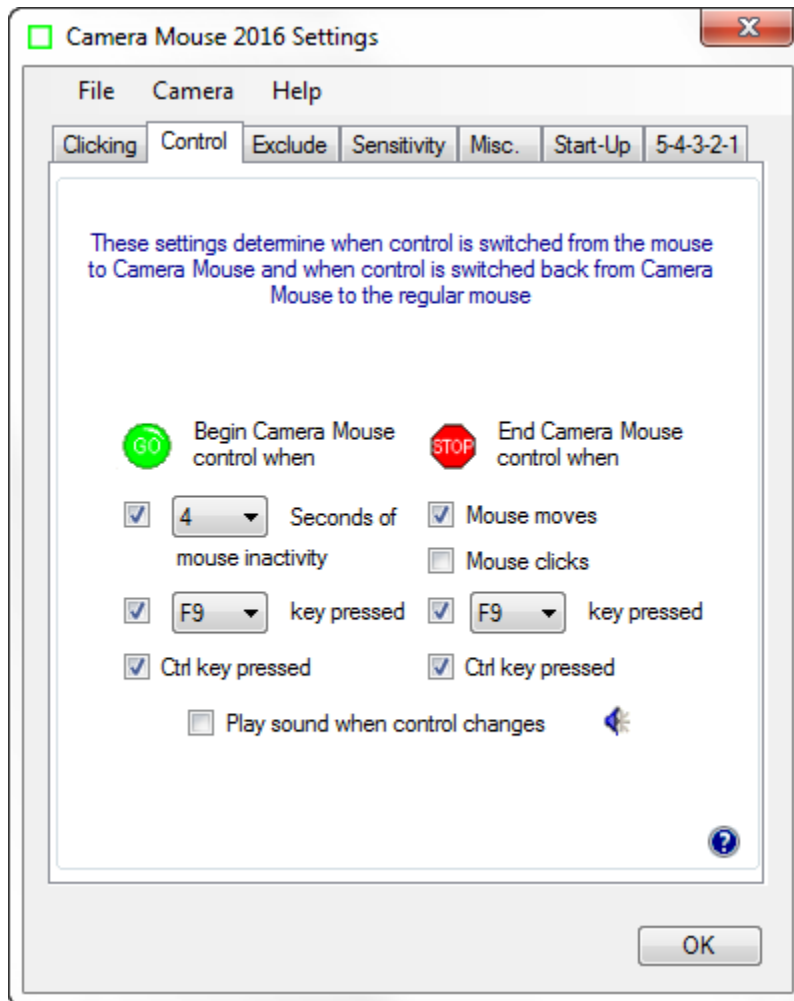
Single-click to open an item (Windows setting)

Double-clicking with Camera Mouse takes a while to get used to. An alternative is to set up Windows so that programs, files, and folders are opened with a single-click instead of a double-click. This can be accomplished in the Windows Control Panel under Control Panel -> Appearance and Personalization -> Folder Options -> Specify single- or double-click to open.

Instead of going to the Windows Control Panel we put an option for this Windows setting on the Click tab of the Camera Mouse Settings. This makes opening programs and files much easier using Camera Mouse. Since this is a Windows setting it continues after Camera Mouse is closed.

## Control tab

The Control tab determines how we can switch from mouse control (or trackpad control or touch control) to Camera Mouse control and back from Camera Mouse control to mouse control.



If the mouse (or trackpad) has control there are three possible ways to begin Camera Mouse control of the mouse pointer: you can leave the mouse untouched for a couple of seconds, you can press the F9 key, or you can press the Ctrl key. Which of these methods will work is determined in the “Begin Camera Mouse control when” setting with the green Go.



If one or the other key does have meaning in the application program you are running, you can click off its use for Camera Mouse.

Similarly, if Camera Mouse has control, there are four possible ways of switching back to mouse (or trackpad) control. The easiest way is to just physically move the mouse (or slide your finger on the trackpad). Or you can have a mouse click cause control to change from Camera Mouse back to the regular mouse. Or you can press the F9 key or the Ctrl key. Which of the three ways is enabled is determined by which boxes are checked under “End Camera Mouse control when” and the red Stop.



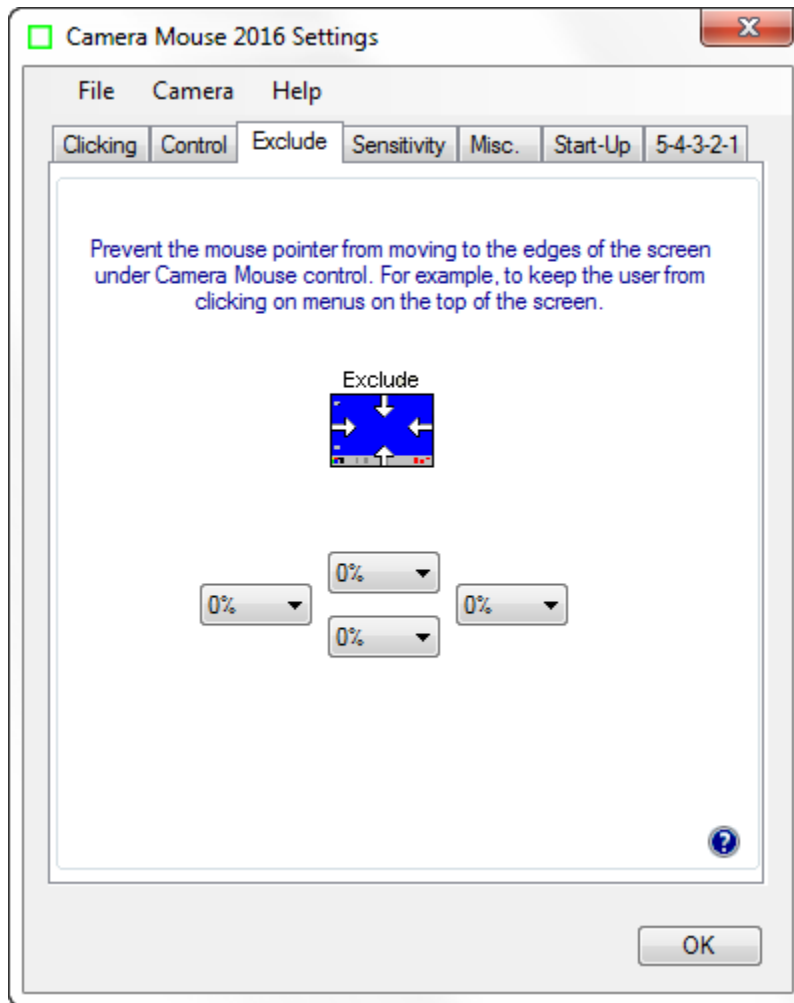
If function key F9 has an alternate meaning for you then you can select any other function key from F1 through F12.

If you'd like, you can have Camera Mouse play a brief sound to alert you when control switches. Just click a check in the box next to “Play sound when control changes”. You can hear the sound that would be played by clicking on the blue sound icon.



## Exclude tab

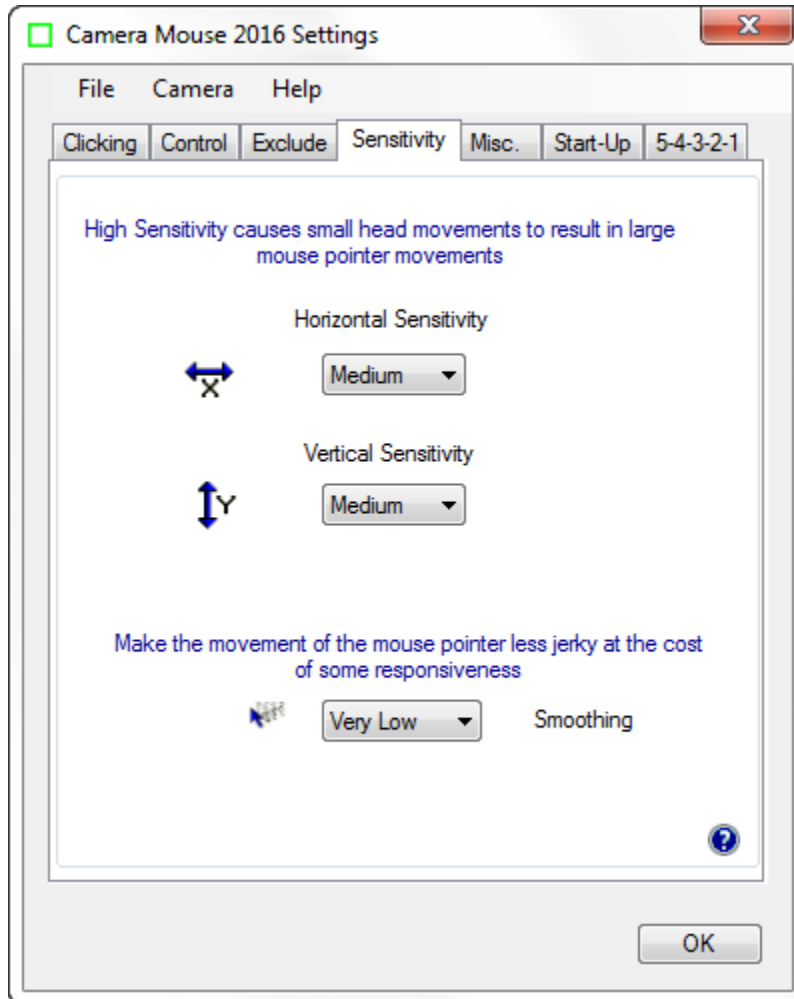
The Exclude feature prevents the mouse pointer from moving to the edge of the screen.



The Exclude feature is included at the request of caregivers who like to run Camera Mouse but don't want the people using the computer to be able to, for example, click on menus at the top of the screen or on other programs at the bottom of the screen or outside of the current window to the right or left. For example, setting the Top Exclude amount to 10% would prevent the user from moving the mouse pointer to the top 10% of the screen.

## Sensitivity tab

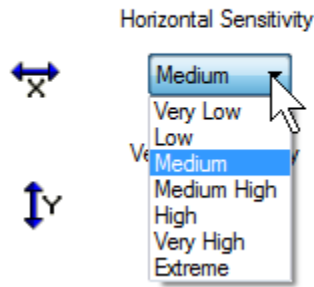
The Sensitivity settings determine how your head movements are translated into the mouse pointer movements.



## HORIZONTAL SENSITIVITY AND VERTICAL SENSITIVITY

If the Horizontal Sensitivity is Low, then horizontal movements of your head result in relatively short horizontal movements of the mouse pointer. If the Horizontal Sensitivity is Very High, then horizontal movements of your head result in relatively long horizontal movements of the mouse pointer. The same for the Vertical Sensitivity. There are seven possible Sensitivity settings for Horizontal and Vertical.

High Sensitivity causes small head movements to result in large mouse pointer movements

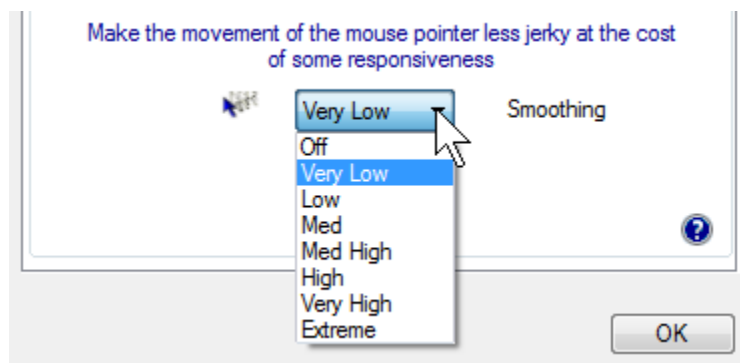


Often people have a more difficult time moving the head vertically than horizontally. It is not unusual to set the Vertical Sensitivity higher than the Horizontal Sensitivity.

An alternative to changing the Sensitivity settings is to go into the Camera pull-down menu and select Camera Settings. The Camera Settings have been provided by the camera manufacturer. Within the Camera Settings there often is place to Zoom in or out. Zooming in effect increases the Sensitivity.

## SMOOTHING

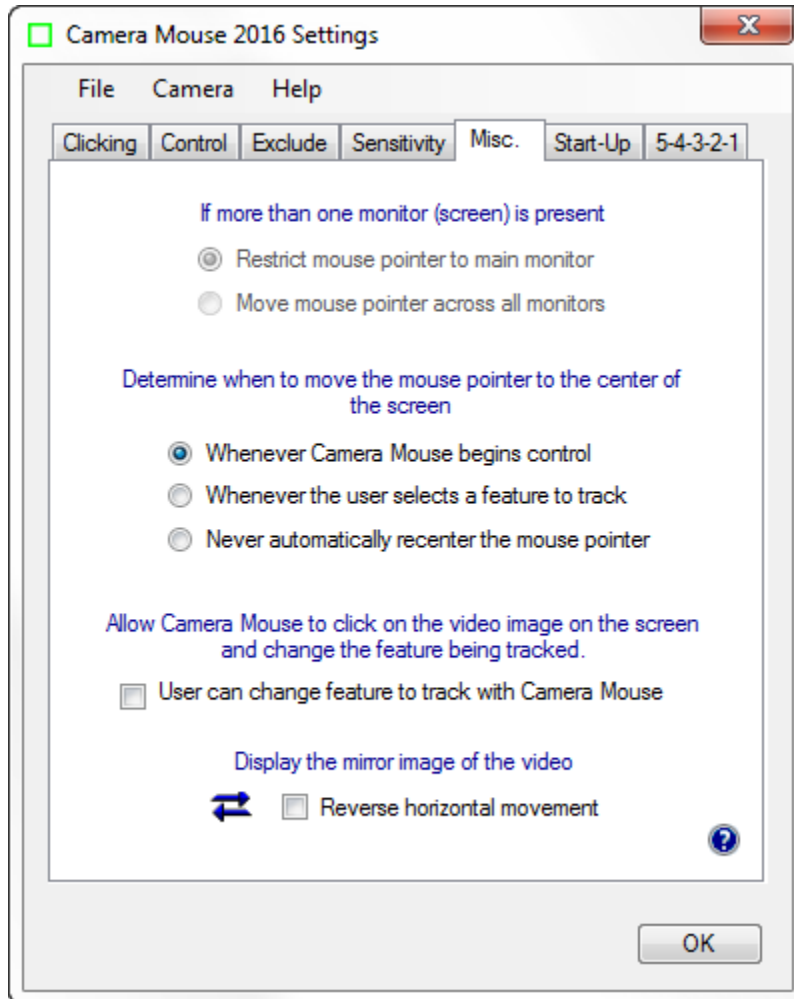
Smoothing allows you to smooth out the jerkiness of the mouse pointer movements with some loss of control. There are eight possible settings:



Some people like little or no smoothing. Some people like lots of smoothing. Best is to experiment to determine personal preference.

## Misc. tab

The Misc. tab contains controls for Multiple monitors, Centering, Camera Mouse control of the feature to track, and Mirror image.



## MULTIPLE MONITORS

- If more than one monitor (screen) is present
- Restrict mouse pointer to main monitor
  - Move mouse pointer across all monitors

If you have a single monitor (screen) on your computer this setting is grayed out and is not applicable.

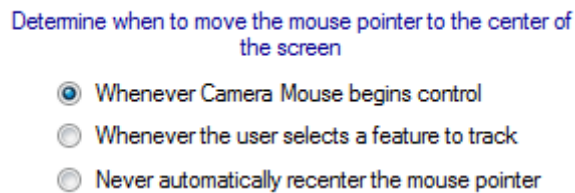
If you have multiple monitors this setting determines whether Camera Mouse will move the mouse pointer across just the main monitor or across all the monitors connected to the computer.

## CENTERING THE MOUSE POINTER

You may not notice at first, but Camera Mouse automatically re-centers the mouse pointer in the middle of the screen each time Camera Mouse begins control.

Thus if Camera Mouse has control and you press the Ctrl key twice then control will switch over to the mouse and then back to Camera Mouse and the mouse pointer will be placed in the center of the screen.

Some Camera Mouse users emailed to request that we provide other options for when Camera Mouse should place the mouse pointer in the center of the screen.



The two other choices are to re-center the mouse pointer whenever a new feature on the face is selected and to never have Camera Mouse re-center the mouse pointer.

## ALLOW CAMERA MOUSE TO CLICK ON THE VIDEO IMAGE ON THE SCREEN AND CHANGE THE FEATURE BEING TRACKED

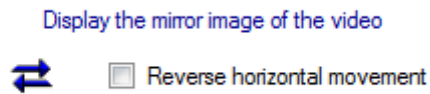
The question here is whether the user can change the feature being tracked by clicking on the new feature of the face in the video image using Camera Mouse. A bit subtle. We used to allow this but then at user request we eliminated it so that clicking on the video image with Camera Mouse would have no effect on the track point (green square). A user from Russia sent an email (in Russian) requesting the return of this feature. So we added it as an option for the user.

## REVERSE HORIZONTAL MOVEMENT

We think the most natural way to use Camera Mouse is for the video window to look like a mirror. So that when you move your head to the right, the image of your head seems to follow you to the right.



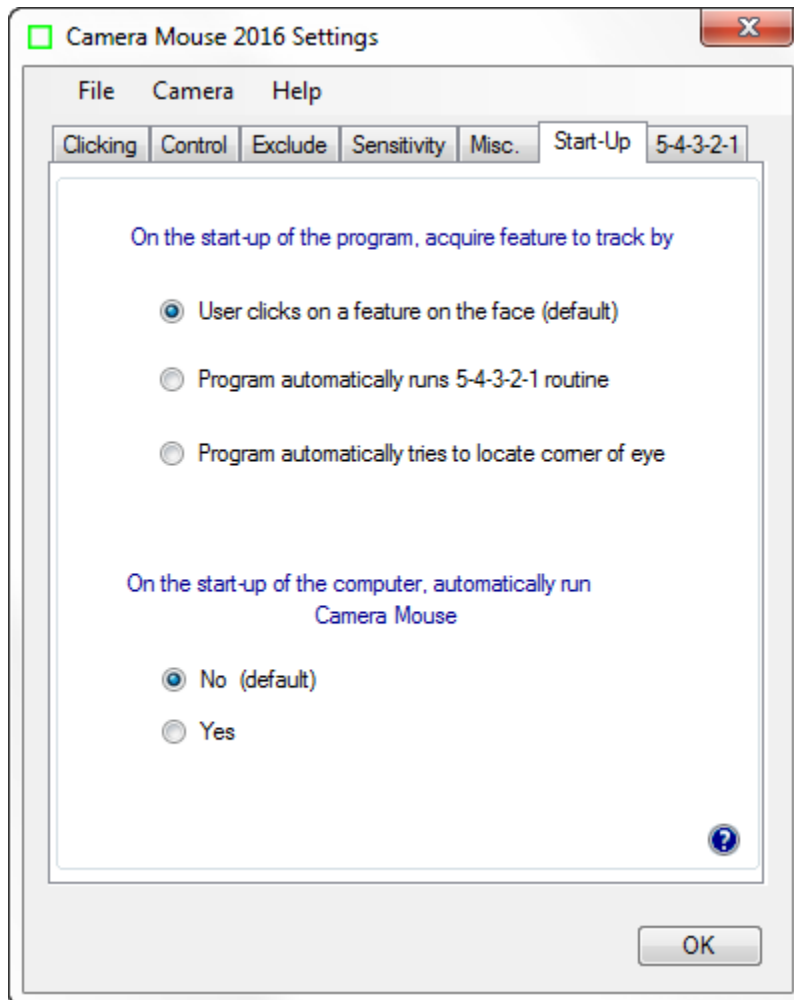
Some people prefer it reversed so that when you move your head to the right the head in the image moves to the screen's right which is to your left. The Reverse Horizontal Movement checkbox allows you to reverse the horizontal movement.



Note that this may be complicated by the Camera Settings. Most cameras have their own Settings window. You can access this window by selecting Camera Settings in the Camera pull-down menu. There you'll probably find a Mirror Horizontal setting or something similar. We suggest you keep this camera setting off. It can get unnecessarily confusing.

## Start-Up tab

The Start-Up tab allows you to change how the feature to track is acquired when Camera Mouse is started and also allows you to determine whether or not Camera Mouse is run automatically when your computer is started.



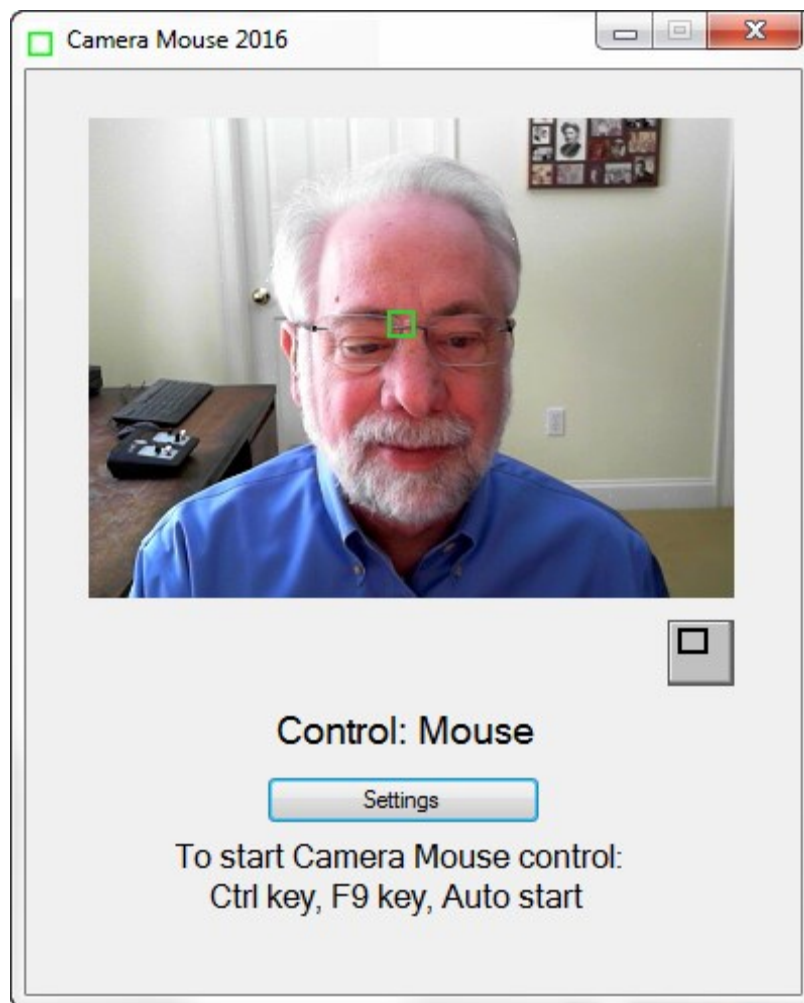
## ACQUIRING FEATURE TO TRACK AT PROGRAM START-UP

There are three possible ways that Camera Mouse can acquire the point to track when the program begins.

On the start-up of the program, acquire feature to track by

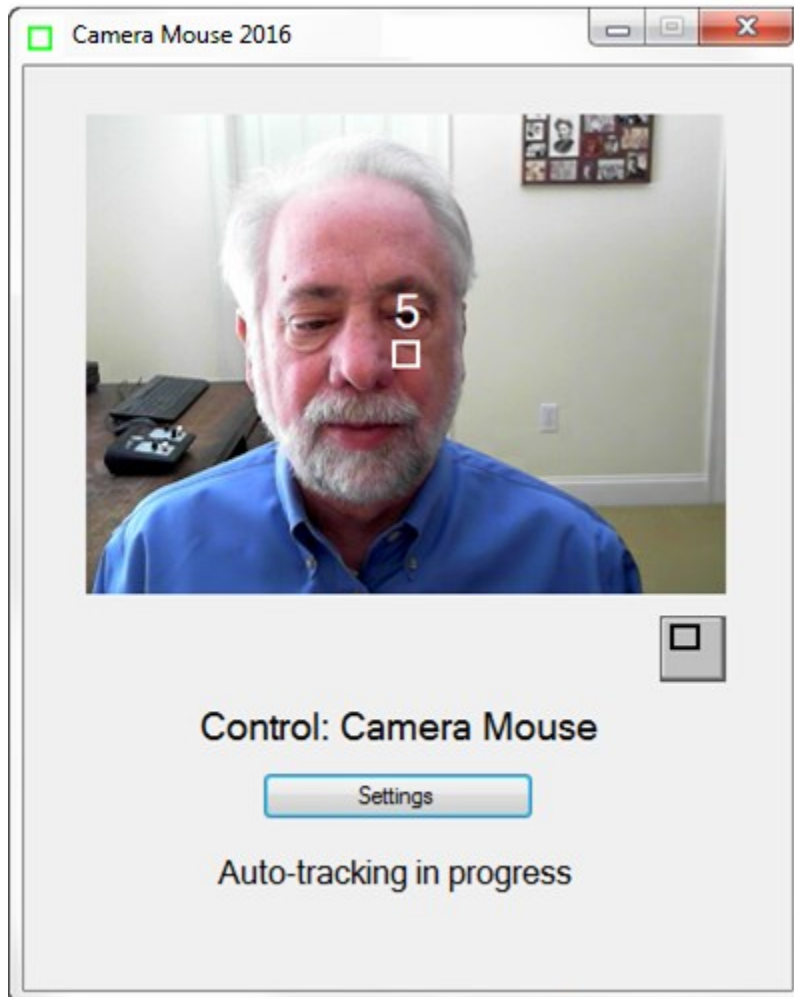
- User clicks on a feature on the face (default)
- Program automatically runs 5-4-3-2-1 routine
- Program automatically tries to locate corner of eye

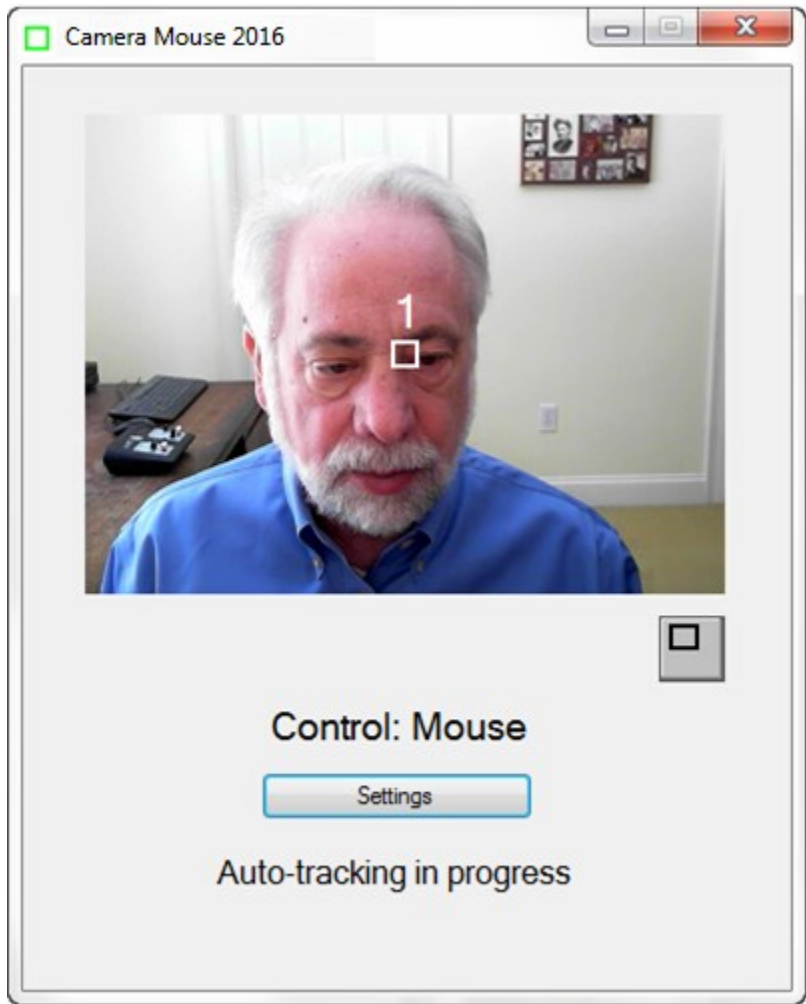
The traditional way is for the user to click on the point on the face to track. In the figures above we have used the corner of the eye. Some people use the ridge on the face between the nose and mouth (difficult with a beard). Some people use the tip of the nose. You can even put a small bandage on your forehead or mark an X. If you wear glasses a good spot to track is some unique shape on the structural elements.

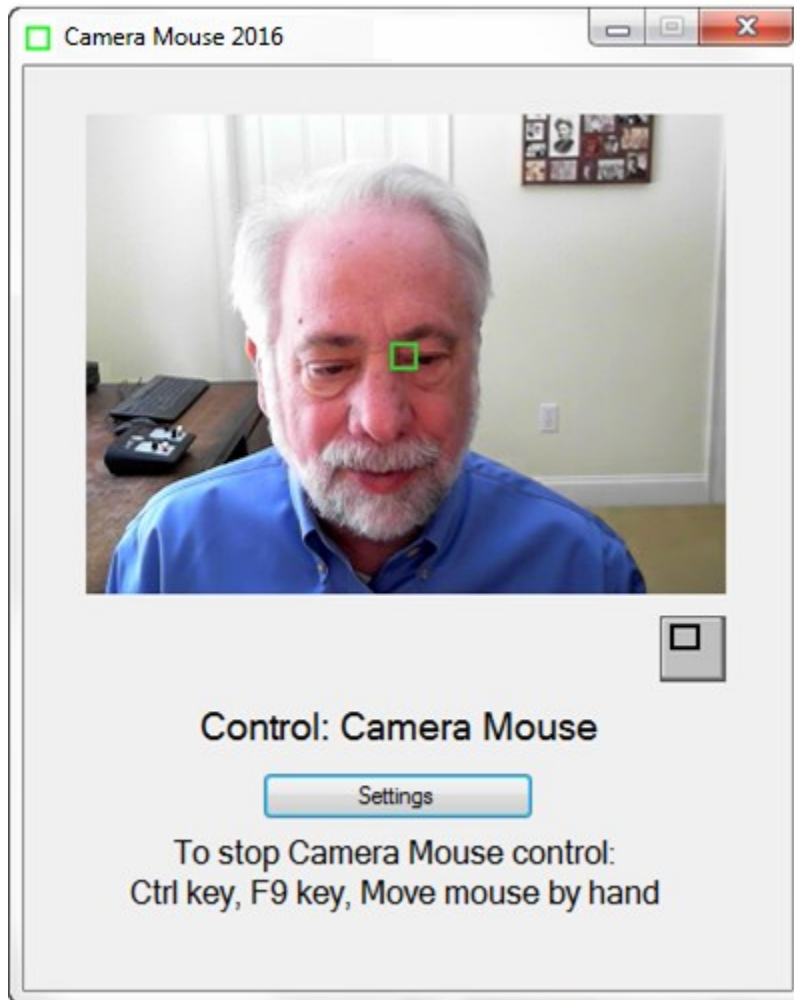


The second alternative is to have Camera Mouse run the 5-4-3-2-1 routine whenever the program is started.

What is the 5-4-3-2-1 routine? It is a way of setting the point on the face that is being tracked. When the 5-4-3-2-1 routine starts a white square (not a green square) appears at the very center of the screen and a white 5 appears on top of it. Camera Mouse then counts down from 5 to 4 to 3 to 2 to 1. The idea is to move your face so the feature you want to track is under the white square when the countdown ends.







The third alternative is to have Camera Mouse automatically try to find the corner of the eye to track on start up.

On the start-up of the program, acquire feature to track by

- User clicks on a feature on the face (default)
- Program automatically runs 5-4-3-2-1 routine
- Program automatically tries to locate corner of eye

## RUN CAMERA MOUSE AUTOMATICALLY WHEN COMPUTER STARTS

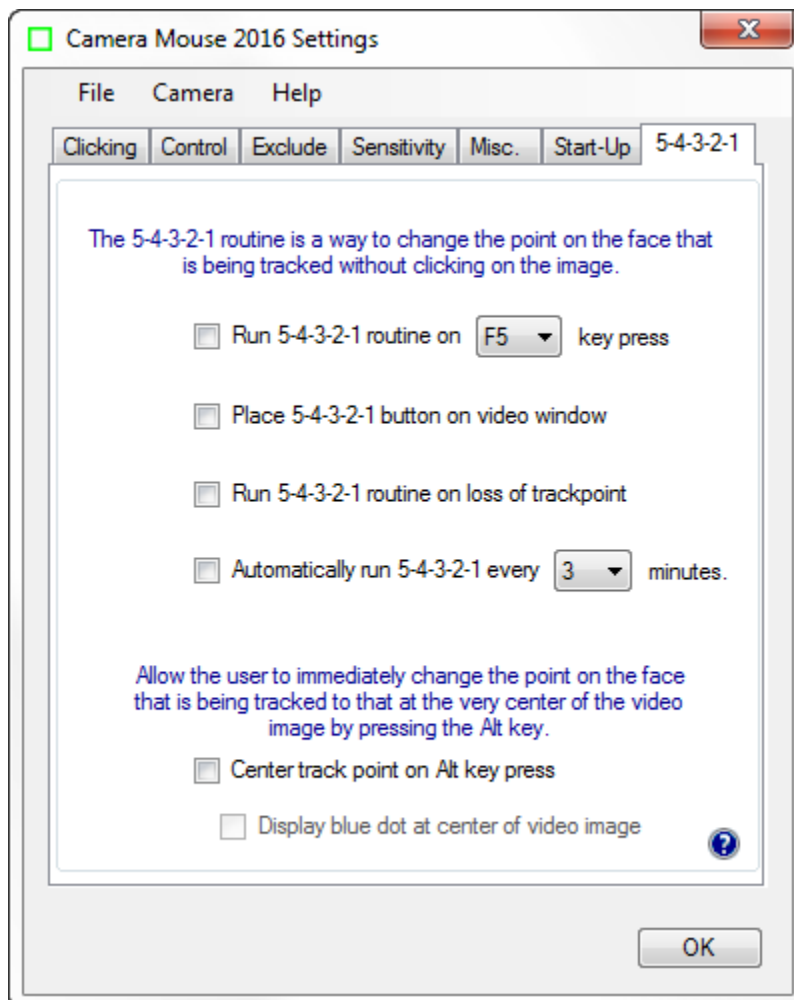
On the start-up of the computer, automatically run  
Camera Mouse

- No (default)  
 Yes

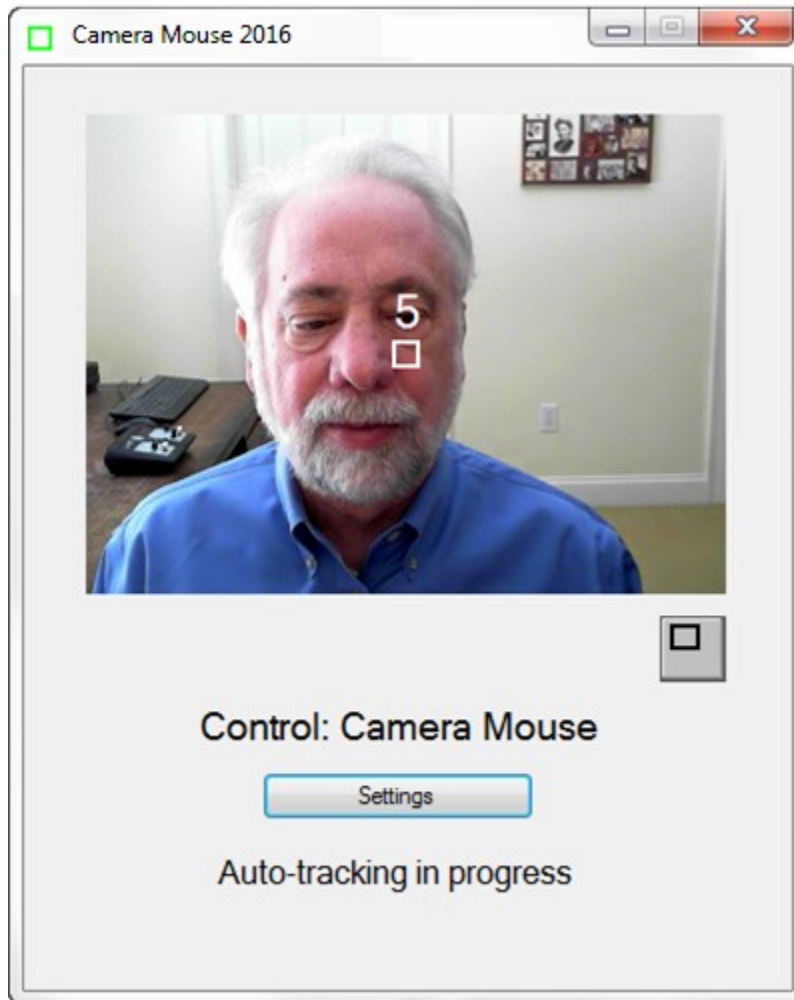
People who use Camera Mouse all the time can select “Yes” here and have Camera Mouse run automatically whenever the computer is started.

### 5-4-3-2-1 tab

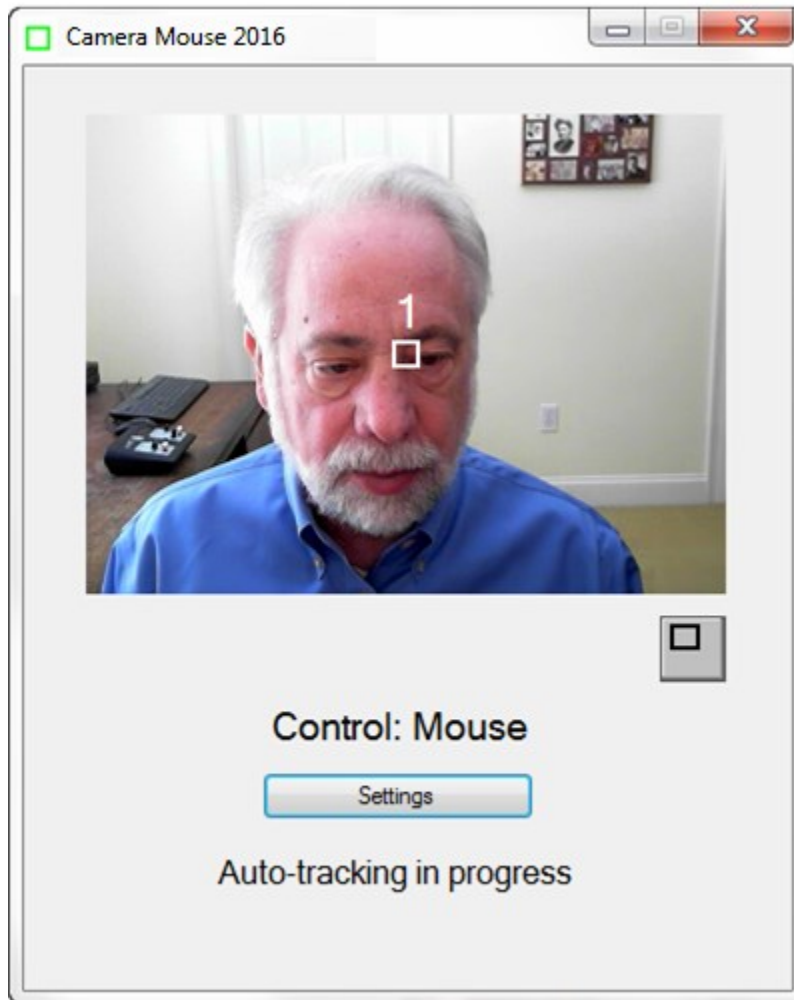
In addition to running the 5-4-3-2-1 routine on the start-up of Camera Mouse, there are four other ways the 5-4-3-2-1 can be initiated depending on which boxes are checked in the 5-4-3-2-1 tab of Settings.



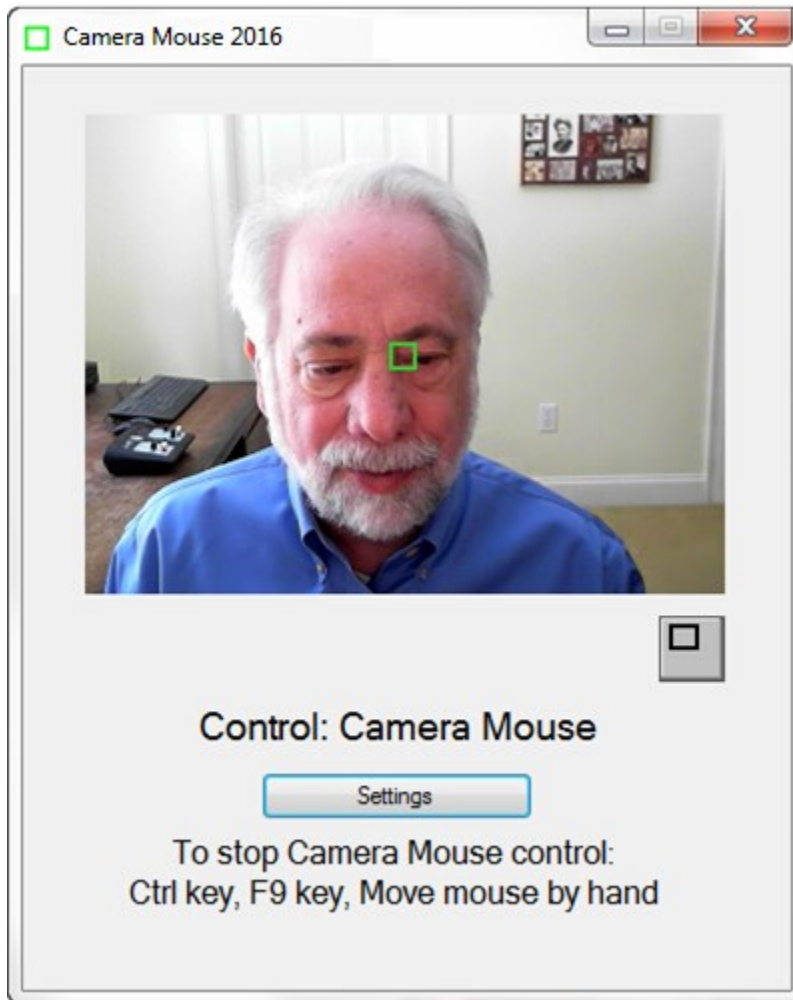
Again, the 5-4-3-2-1 routine puts a white square in the middle of the screen. The idea is for you to move so that the point you want to track is in the middle of the white square when the computer counts down from 5 to 4 to 3 to 2 to 1. Whatever is in the middle of the white square at 1 will be tracked by the green square







Whatever feature on the face is in the middle of the white square at 1 will be tracked by the green square



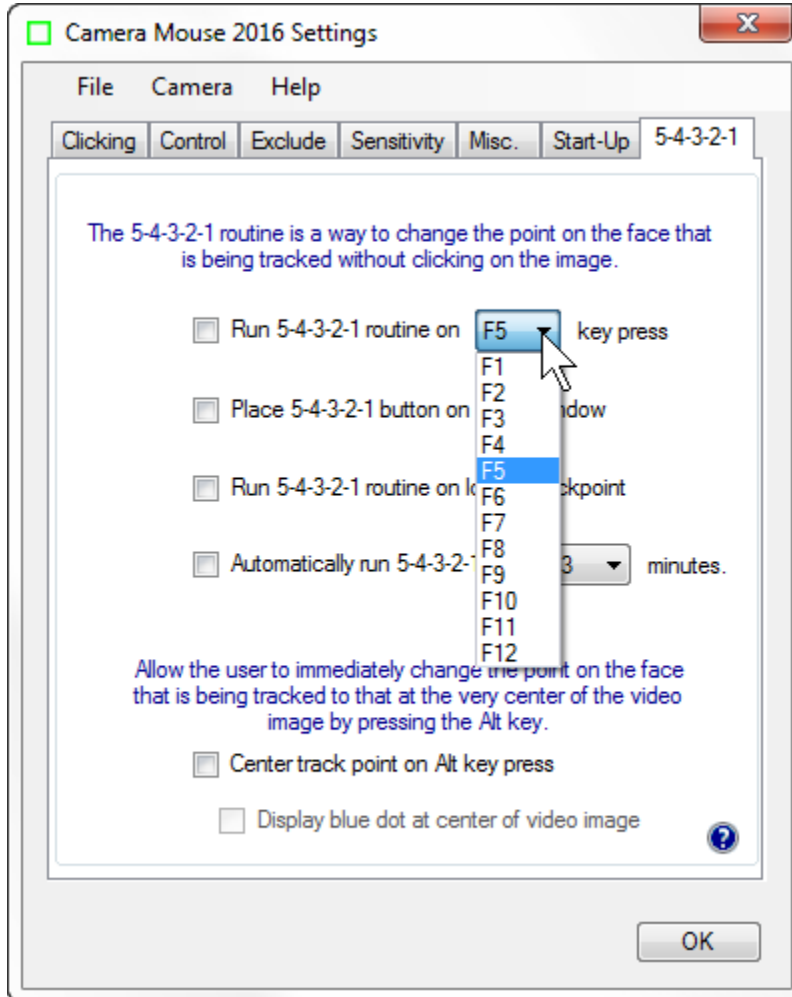
The 5-4-3-2-1 routine is a way to change the point on the face that is being tracked without clicking on the image.

- Run 5-4-3-2-1 routine on  key press
- Place 5-4-3-2-1 button on video window
- Run 5-4-3-2-1 routine on loss of trackpoint
- Automatically run 5-4-3-2-1 every  minutes.

If you click on the box “Run 5-4-3-2-1 routine on F5 key press”

- Run 5-4-3-2-1 routine on F5 key press

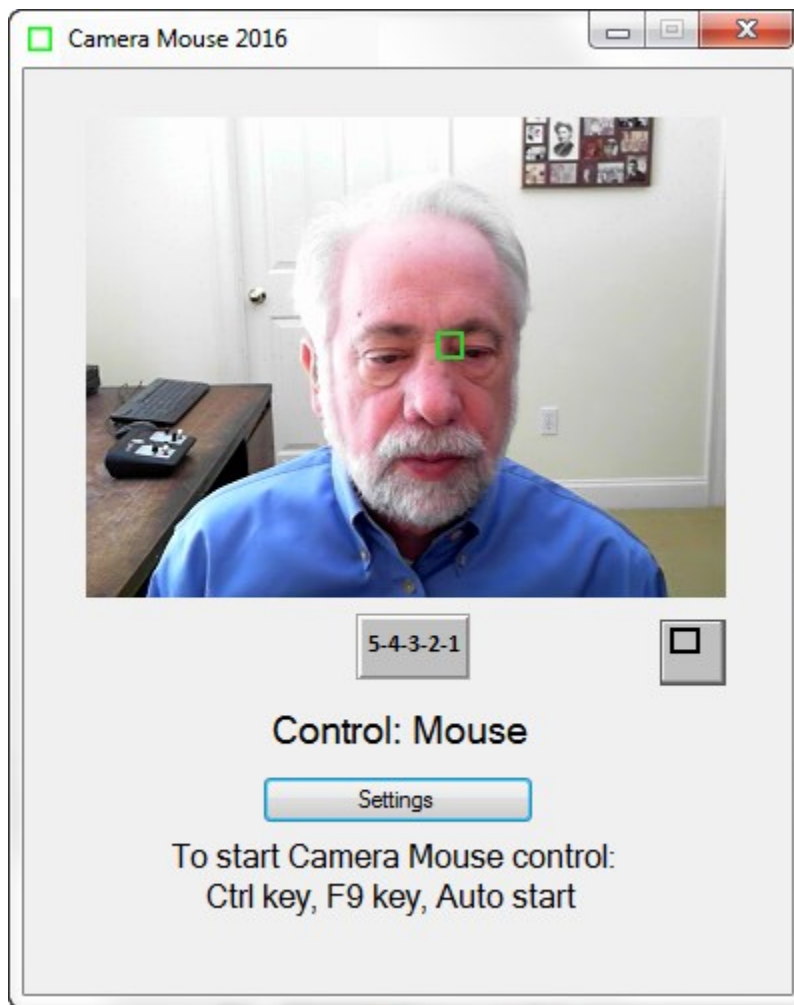
then you will be able to run the 5-4-3-2-1 routine whenever you press the function key F5 on the keyboard. As you can see if the F5 key has some other meaning then you can change the function key that runs 5-4-3-2-1.



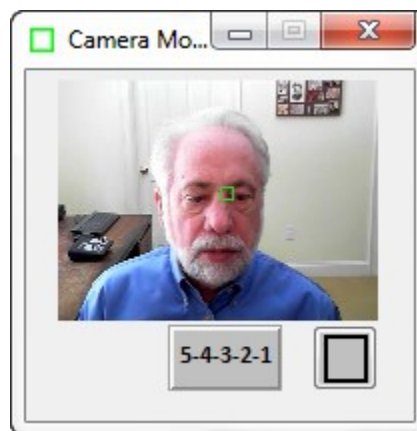
If you click on “Place 5-4-3-2-1 button on video window”

Place 5-4-3-2-1 button on video window

then a new button appears on the Camera Mouse window. Clicking on the button (either with the mouse or with Camera Mouse) triggers the 5-4-3-2-1 routine.



If this option is selected, the 5-4-3-2-1 button also appears on the smaller window.



If you click on the option “Run 5-4-3-2-1 routine on loss of trackpoint”

Run 5-4-3-2-1 routine on loss of trackpoint

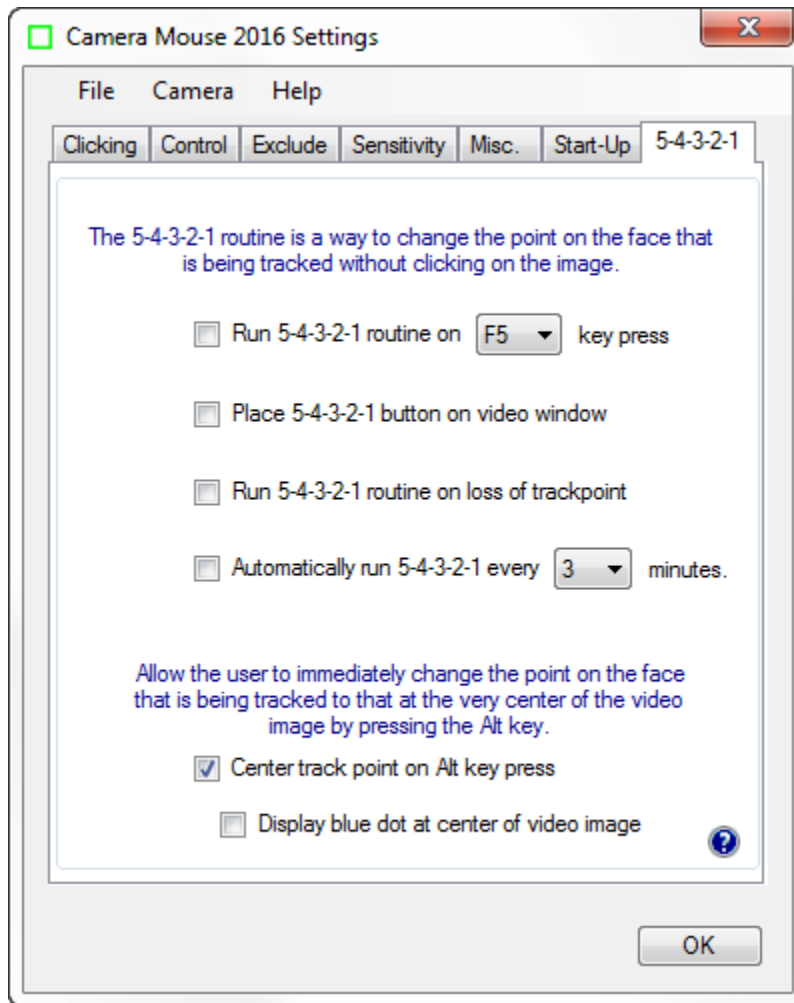
then if the head moves off the screen and Camera Mouse loses tracking the 5-4-3-2-1 routine will be run automatically.

Automatically run 5-4-3-2-1 every  minutes.

If you click on the option “Automatically run 5-4-3-2-1 every 3 minutes then, yes the 5-4-3-2-1 routine will be run every 3 minutes. The 3 is changeable to any value between 1 and 10.

### CENTER TRACKPOINT ON ALT KEY PRESS

If you click on “Center track point on Alt key press” then whenever you press the Alt key on the keyboard, Camera Mouse immediately will change the feature on the face that is tracked to whatever is at the exact center of the video screen at that moment. This acts like 5-4-3-2-1 but without all the preliminaries.



As soon as you click on “Center track point on Alt key press then a new option is available “Display blue dot at center of video image”. The purpose of this option is to enable the operator to see what is at the center of the video image and exactly which feature would be selected by pressing the Alt key.

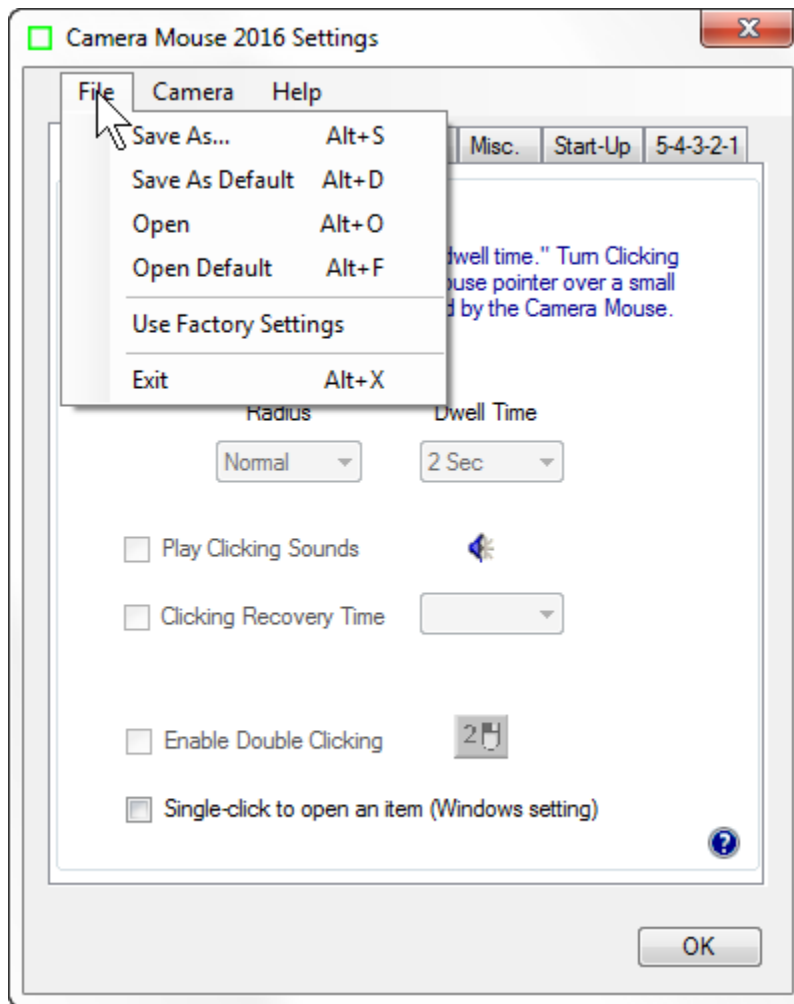
Allow the user to immediately change the point on the face that is being tracked to that at the very center of the video image by pressing the Alt key.

- Center track point on Alt key press
- Display blue dot at center of video image

## MENUS

Now let's take a look at the menu items.

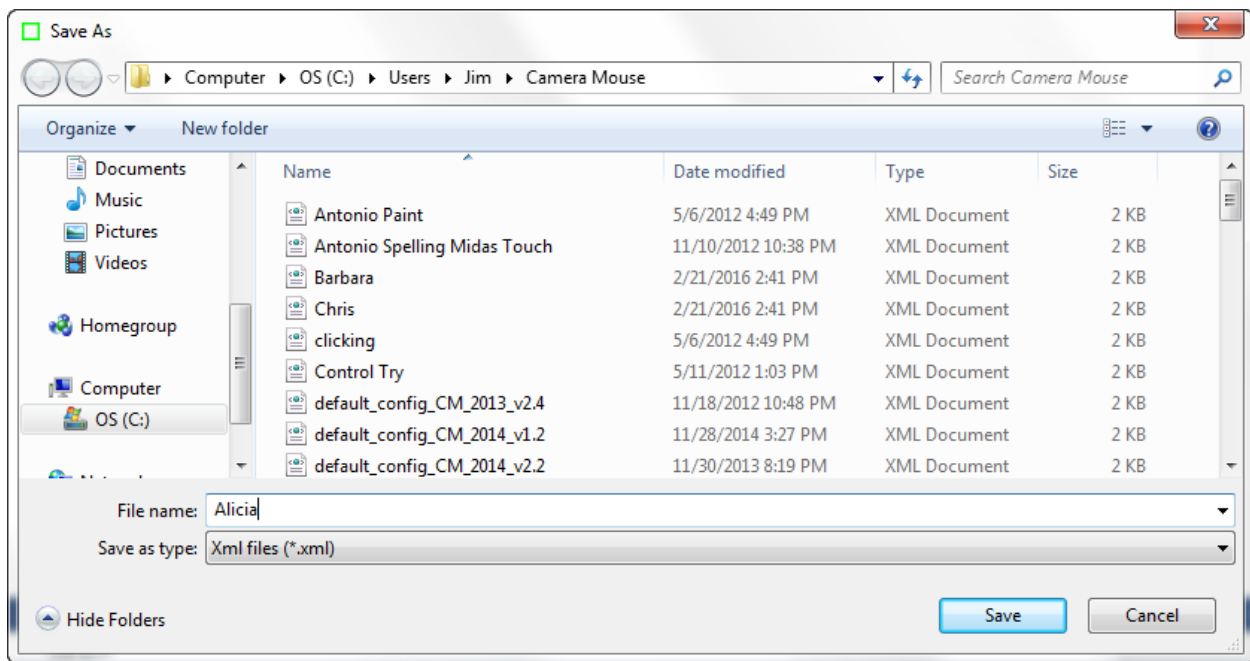
### File menu



Different Camera Mouse Settings might be used with different software or by different people. With Camera Mouse you can Save the settings through the File pull-down menu.

### SAVE AS ...

The Save As... menu option allows you to give the current settings a name and then save them on the disk for future use. *ALL of the settings under all the tabs are saved in one file.* For example, to save Alicia's settings:



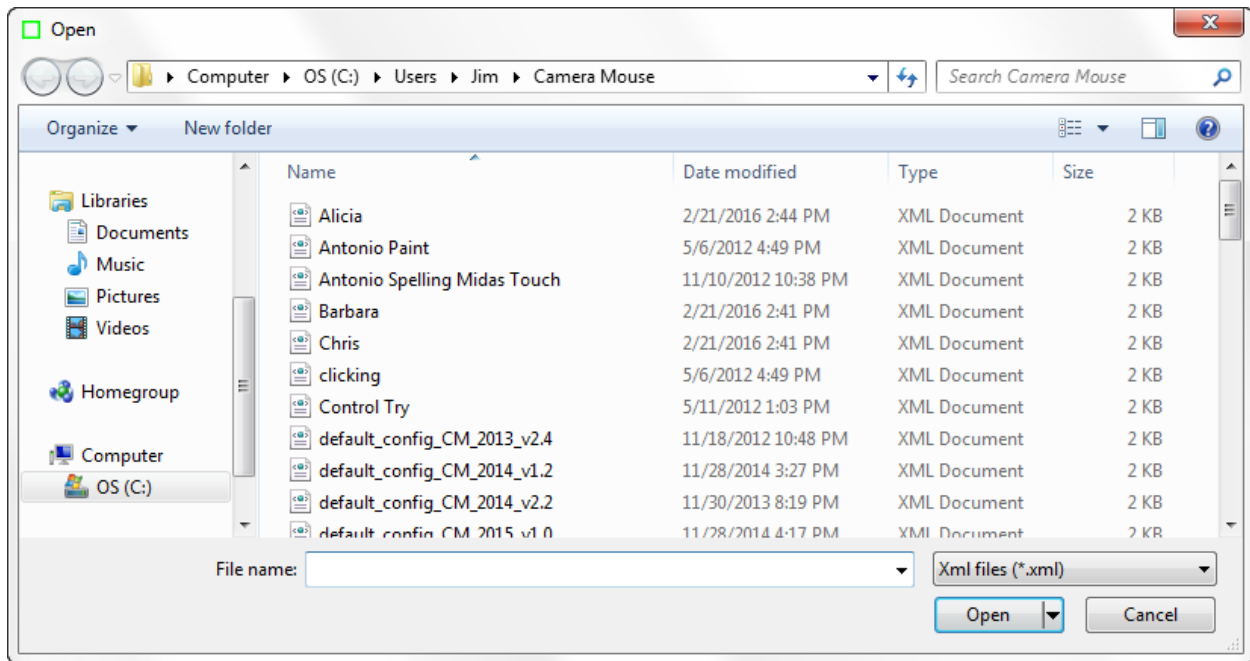
## SAVE AS DEFAULT

Save As Default allows you to save the current settings as the default settings. These are the Camera Mouse Settings that the program uses automatically when it is started up.

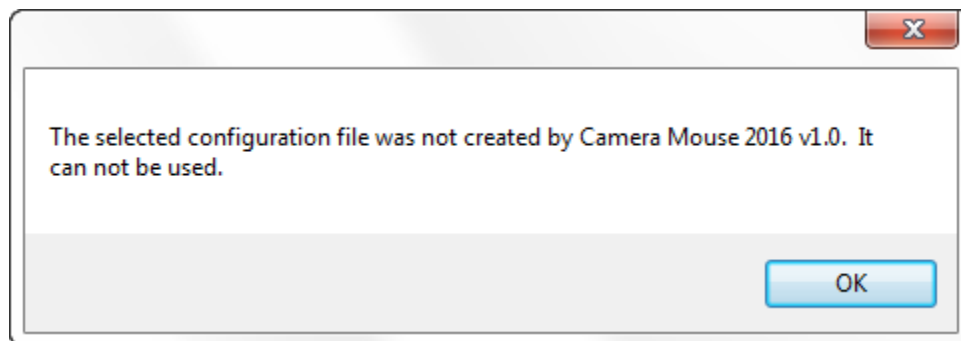
## OPEN

Open allows you to Open a previously saved Camera Mouse Settings file.



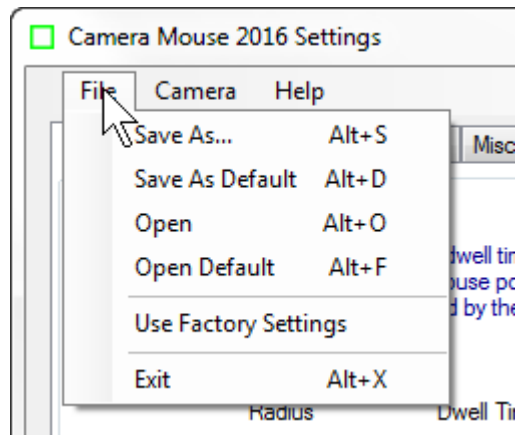


If the file you select was not saved by the current Camera Mouse version the program will not be able to open the file and you will receive a message to that effect.



## OPEN DEFAULT

Open Default allows you to open the current default file. The current default settings become the new settings for Camera Mouse.



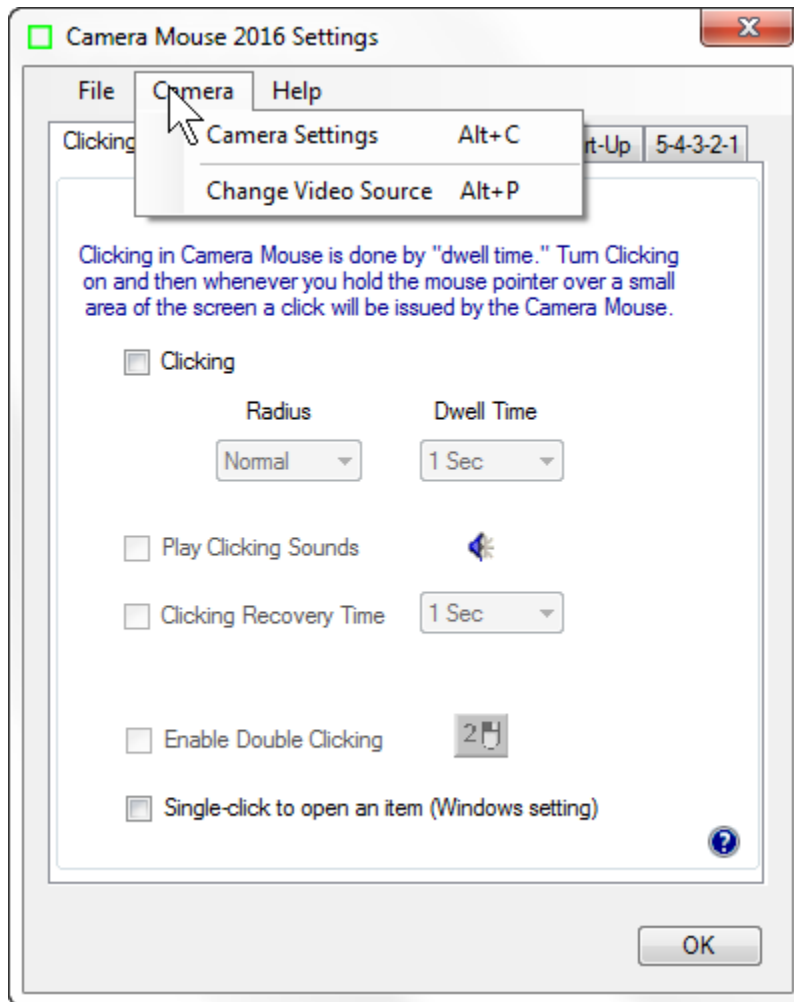
## USE FACTORY SETTINGS

If you want to return to the original settings that came with the program from the “Factory” select Use Factory Settings in the File pull-down menu. This changes the Settings in the window. They then can be saved on the disk as the default through the File menu.

## EXIT

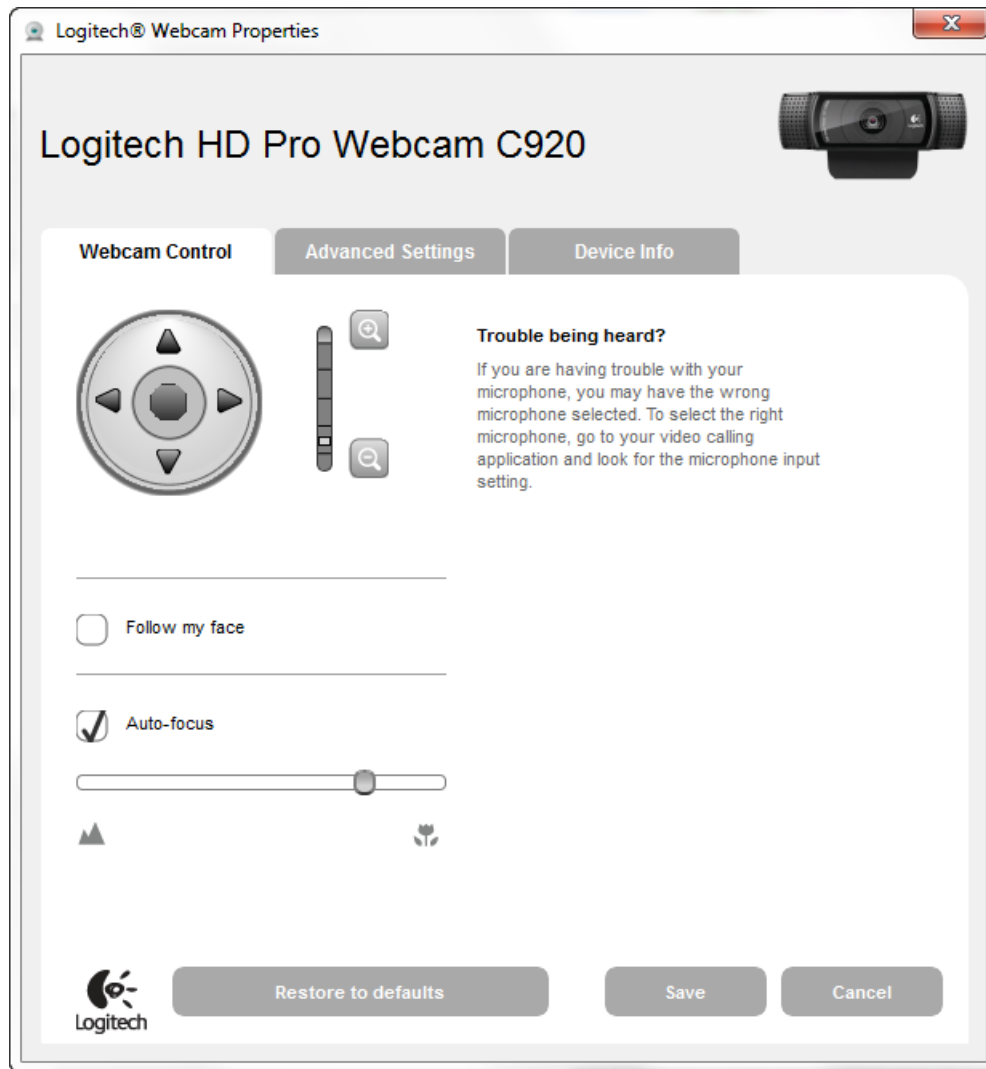
Selecting Exit in the File menu causes the Settings Window to close. Selecting Exit is the same as clicking on the OK button at the bottom of the Camera Mouse Settings window.

## Camera menu



## CAMERA SETTINGS

Camera Settings takes you to the control window for the USB camera you are using. Camera Settings are provided by the manufacturer of the webcam you are using. For example, with my Logitech HD Pro Webcam C920 camera here's the window I see when I first click on Camera Settings:



The most useful control here is the **digital zoom** control for the webcam.



By adjusting the zoom you can adjust the size of the face in the video window. In the examples above the zoom control is one notch up so the face appears to be larger in the video window than with the default webcam setting, which is at the lowest setting.

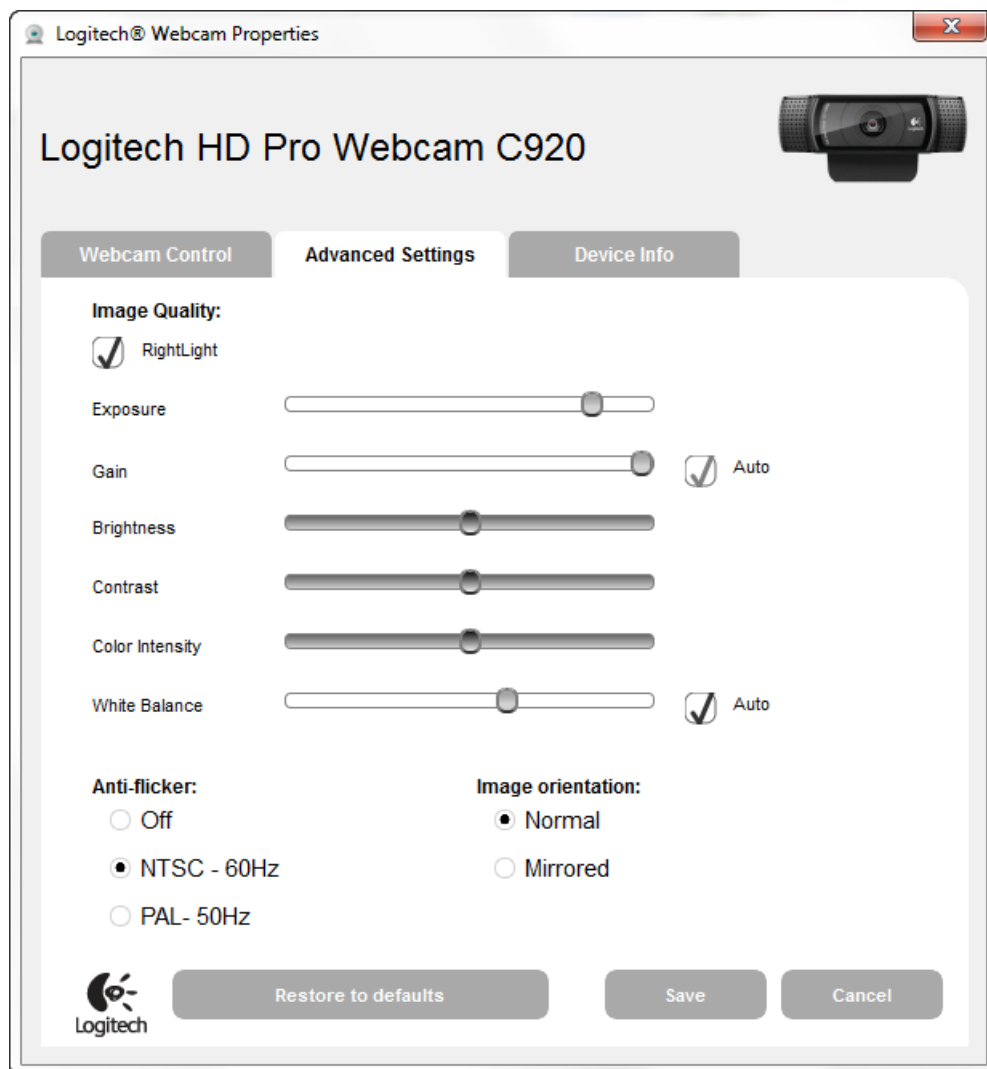
If the facial feature with the Camera Mouse track point often moves off the edge of the screen then it would be good to zoom out the camera some more if you can. The Gain settings and the zoom

counteract each other in the sense that if you are way zoomed out then you might need higher Horizontal and Vertical Gain settings.

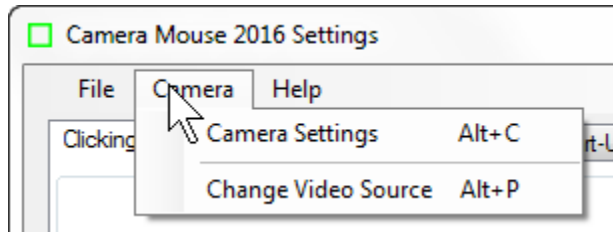
Note that you usually want “Follow my face” unclicked or off (or “Automatic Face Tracking Off”) in the Camera Settings because Camera Mouse is doing face tracking and if your camera is also then the two can counteract each other in strange ways. The only exception we have found is if the person using Camera Mouse has large spastic movements of the head. Then putting on automatic Face Tracking in the camera might prove useful.

Usually you want Auto-focus turned on, as above.

Clicking on the Advanced Settings tab shows the following window:



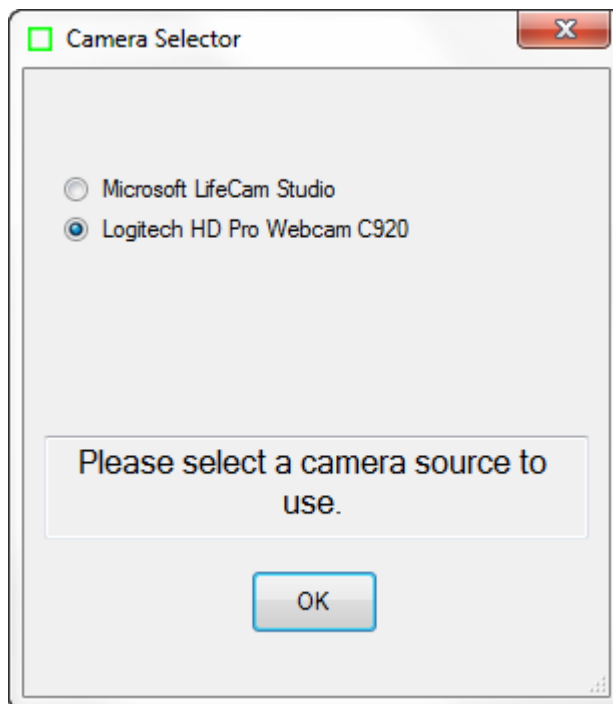
Using “RightLight” usually is good because this causes the camera driver to automatically adjust the brightness and coloring for best viewing and also for best tracking.



## CHANGE VIDEO SOURCE

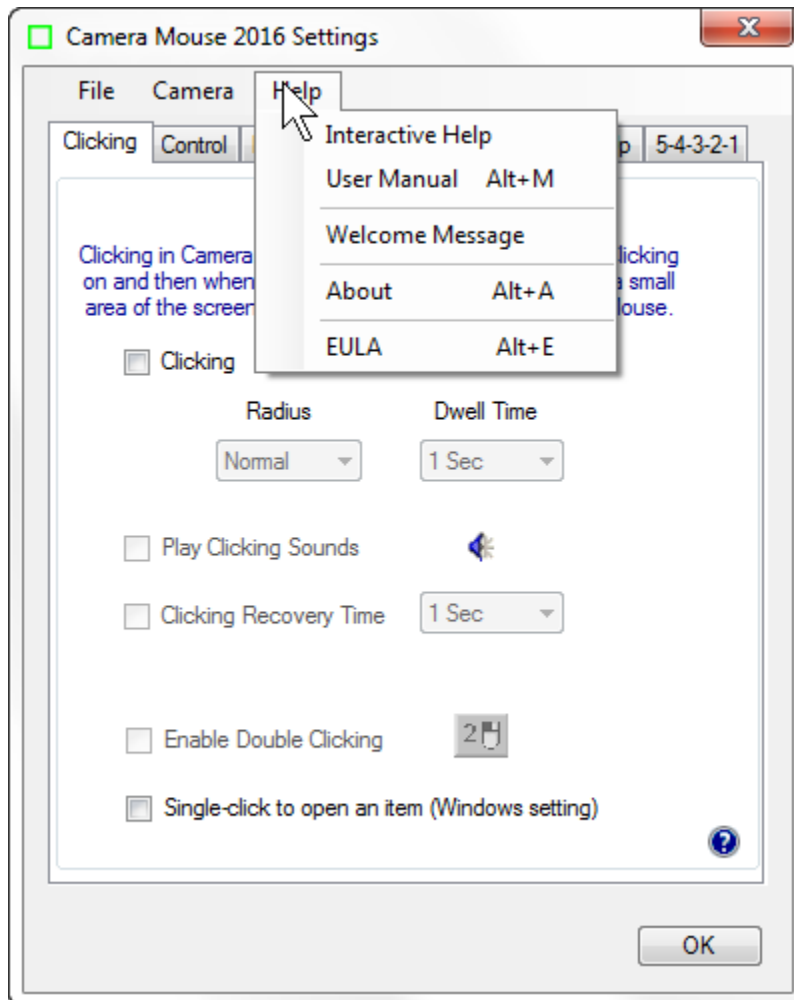
If there is just one camera or source of video connected to the computer or tablet then the Change Video Source menu item will be gray and not able to be selected.

If two or more cameras are connected to the computer or tablet then you can choose this menu item to change the cameras for Camera Mouse if you would like



This menu item also is useful if you have a television tuner or other non-related video source connected to your computer.

## Help menu

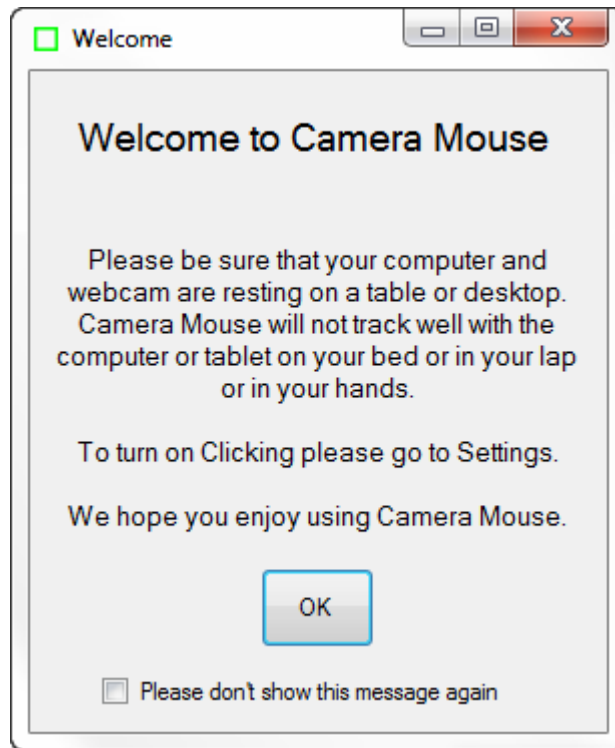


### INTERACTIVE HELP and USER MANUAL

The Help menu can be used to call up the Interactive Help facility as well as this manual.

### WELCOME MESSAGE

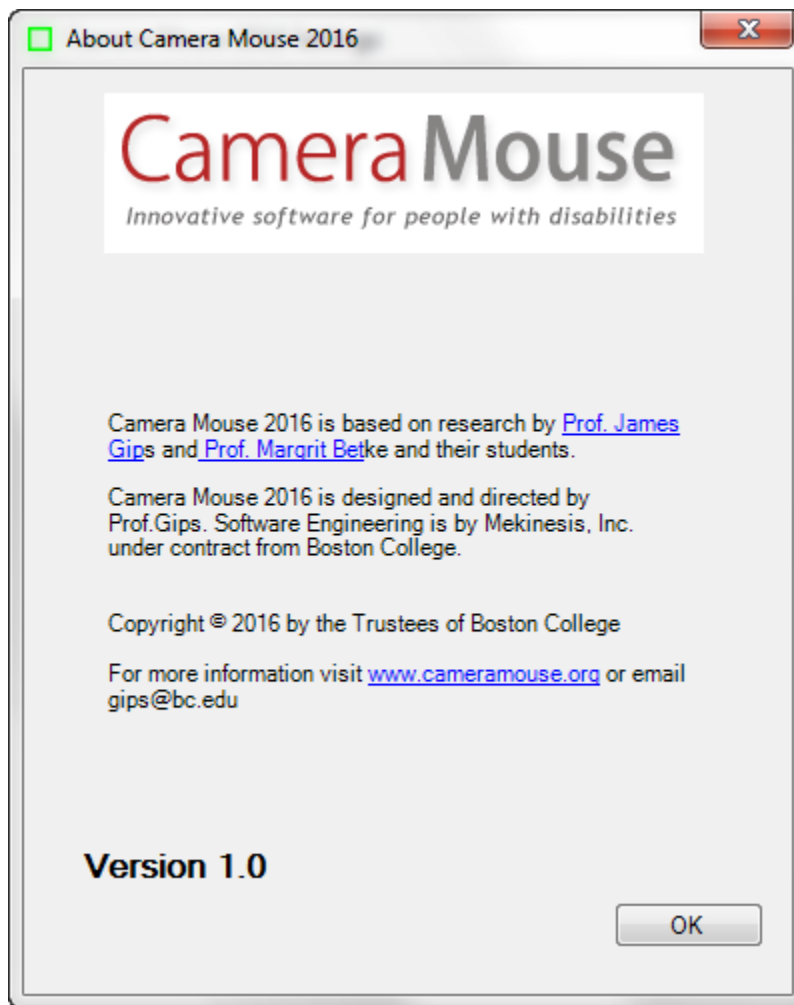
The Welcome Message selection displays the message box that was displayed after the Camera Mouse program first was installed.



## ABOUT

The About selection displays the About box:

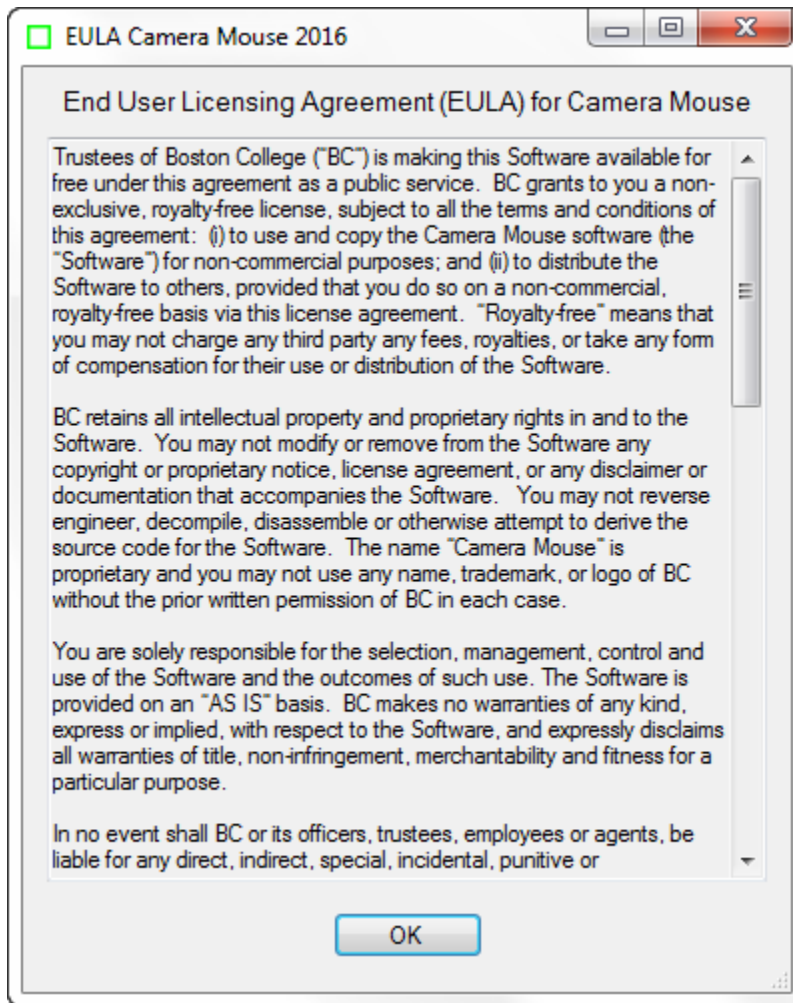




The About box shows the version number of the software you are using.

## EULA

Selecting EULA in the Help menu shows the End User Licensing Agreement (EULA) for Camera Mouse.



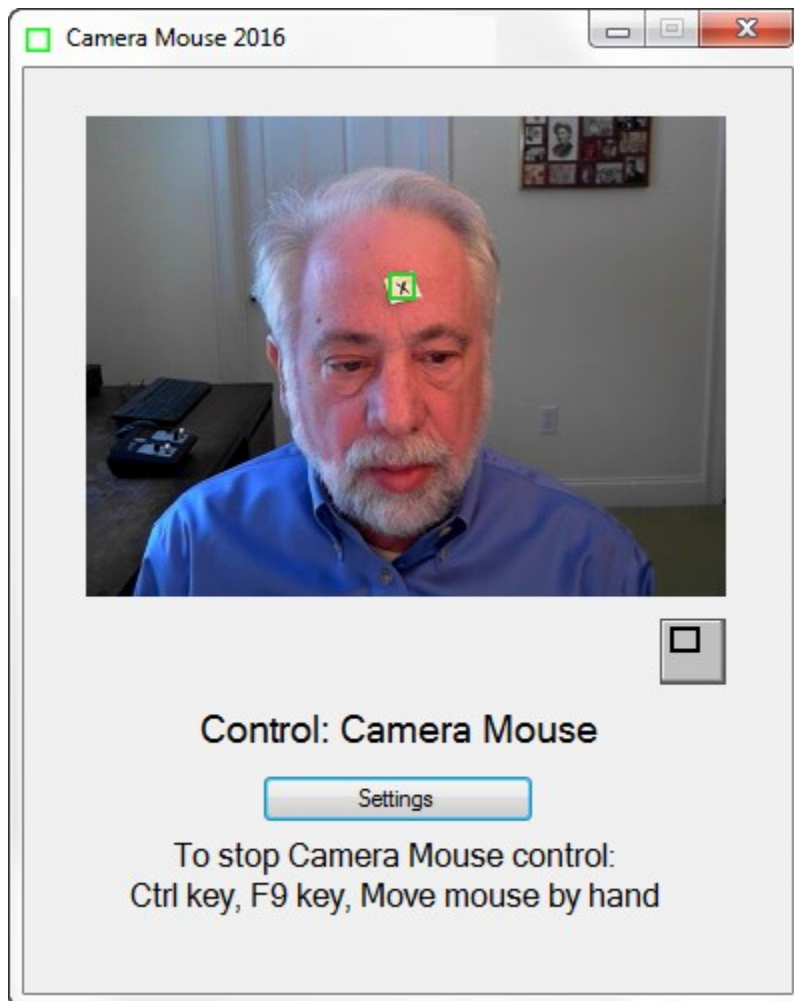
## HINTS FOR IMPROVING TRACKING

The quality of tracking in Camera Mouse obviously is very important for the performance and usefulness of the program. We work all the time to improve the tracking. Here I would like to discuss measures that you can take to improve the tracking.

The most common mistake that people make is to try to use Camera Mouse with the computer on their lap or while lying in bed or with the tablet in their hands. To track well, it is vital that the camera, and usually that means the computer or tablet, is resting rock solid on a table or desk. If you are using a Windows tablet you should get a stand for it if you don't have one. That is why we added the Welcome message to Camera Mouse.

As the green square is intended to indicate, Camera Mouse is tracking just a small square area on your face. In its tracking Camera Mouse does not understand faces or facial features at all, just small square areas. That area should be as unique in its visual content as possible. For example, clicking on an area in my forehead is not a good idea. One part of my forehead looks just the same as other parts of my forehead, so the tracking point as indicated by the green square is likely to

slip and slide across my forehead. From visual inspection and from experience, good spots to track are at the corner of my eye or the corner of my eyebrow. If I didn't have a moustache then the ridge between my nose and mouth probably would work well. My nostril can work OK. The bridge on my glasses works well if I am wearing glasses. Putting a piece of adhesive tape or masking tape with an X drawn in black ink on my forehead works well. Here is me with a square cut from a Post-It with an X drawn on it to illustrate.

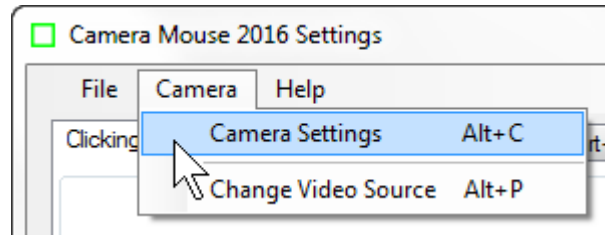


The lighting is very important. You want high contrast on the face. A bright light or bright window behind the head can darken the face and make it difficult for Camera Mouse to track. Of course the lighting can change during the course of the day and into the night. Lighting that works well at noon might not work at 5 pm or at 9 pm. You also want high contrast as the user moves or turns his head so be careful of strong lighting from one side.

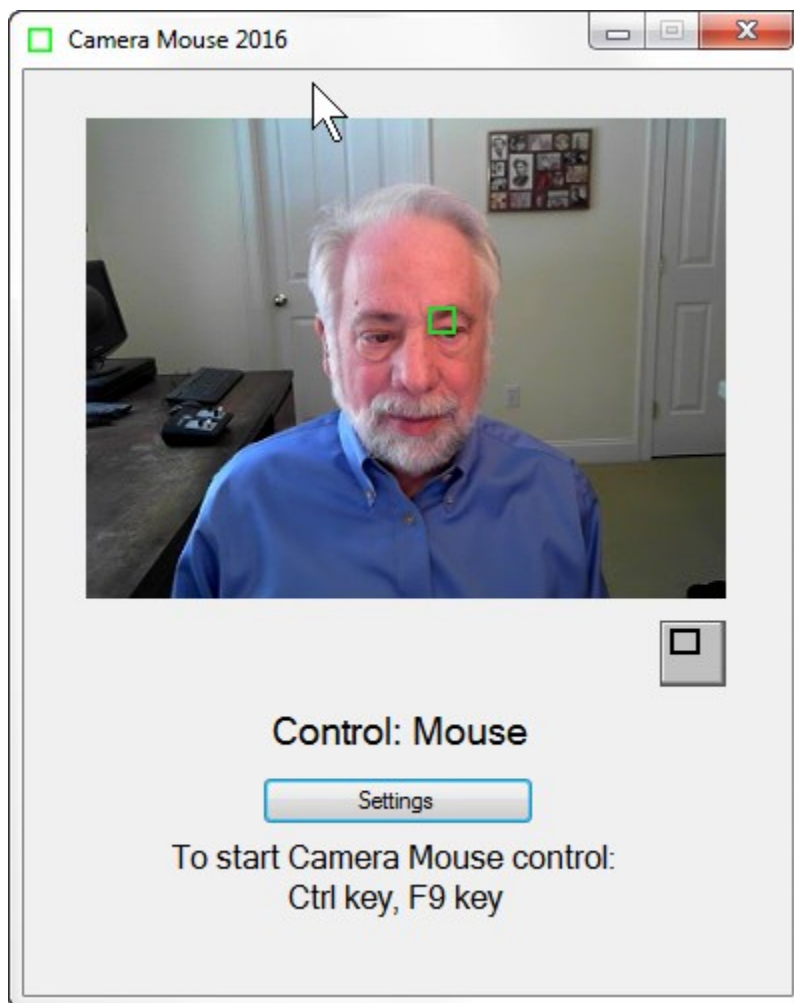
The quality of the camera being used is very important. I recently bought a not inexpensive notebook computer that has a terrible built-in camera. The video image just looks muddy. Unfortunately, it seems that the well-known manufacturer decided to save money by building in a

low quality camera. I find myself attaching a Microsoft LifeCam Studio HD (\$50 at Amazon) to the notebook.

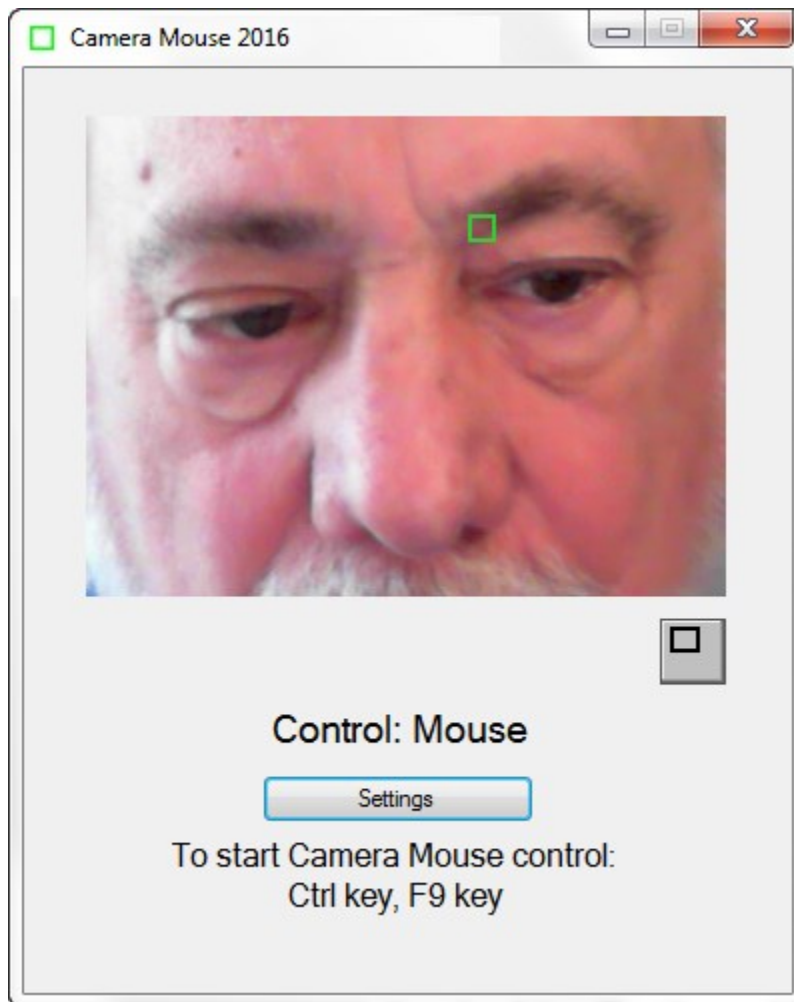
Experiment with the Camera Settings.



Especially experiment with the camera zoom, if your camera allows changes in the zoom. Here is low zoom.



Here is high zoom.



With high zoom my head fills the video image. Natural head movements cause the area being tracked to move out of the video image thereby automatically causing Camera Mouse to lose tracking, though it does reacquire usually a different track point when you move your head back in to the video image.

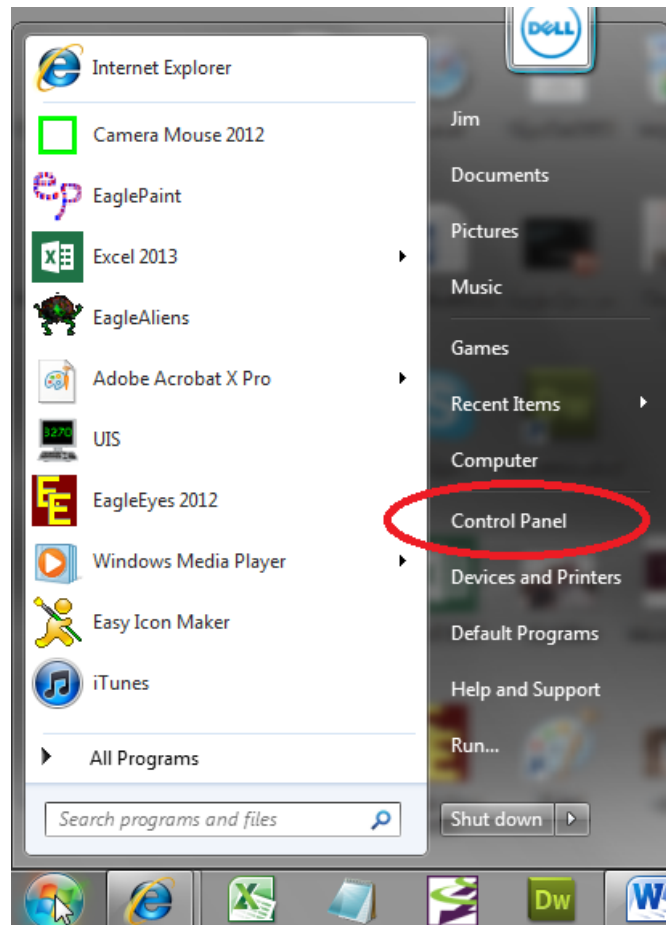
The bottom line is that many environmental factors affect tracking. Best is to experiment to see what works best for you in your specific environment.

## MAKING THE MOUSE POINTER LARGER AND EASIER TO SEE

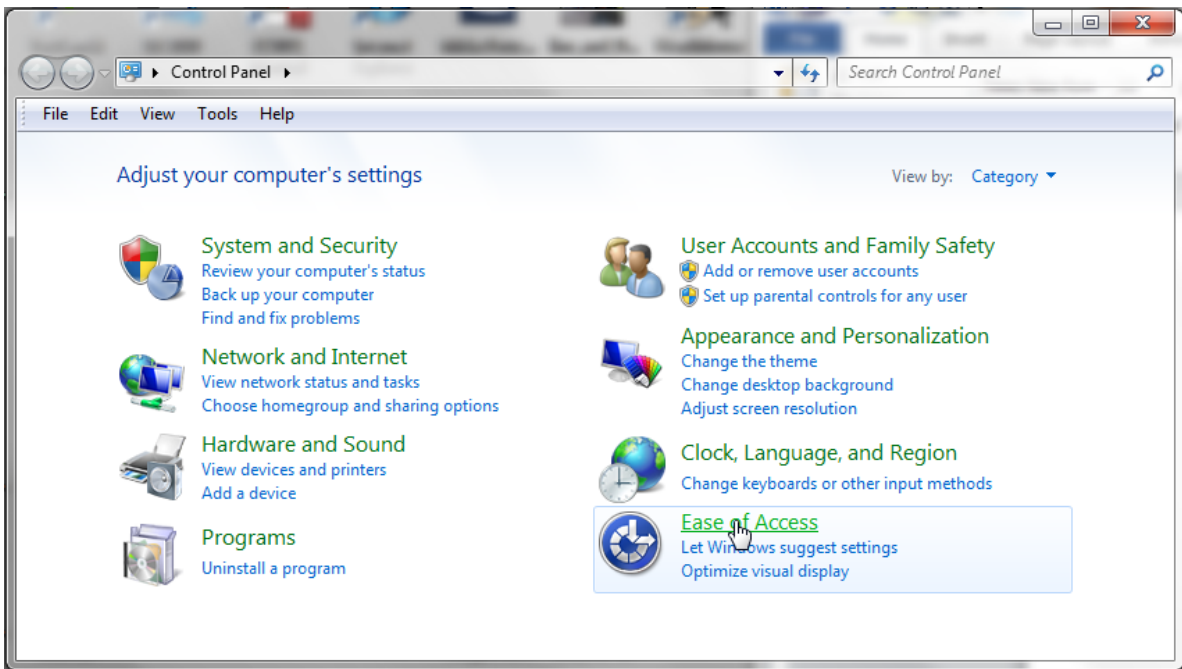
Some people report “losing” the mouse pointer on the screen when using Camera Mouse.

You can make the mouse pointer larger than usual and thus easier to see using the Windows Control Panel. (These instructions are for my Windows 7 Home Premium. Other versions of Windows are similar but may not be exactly the same.)

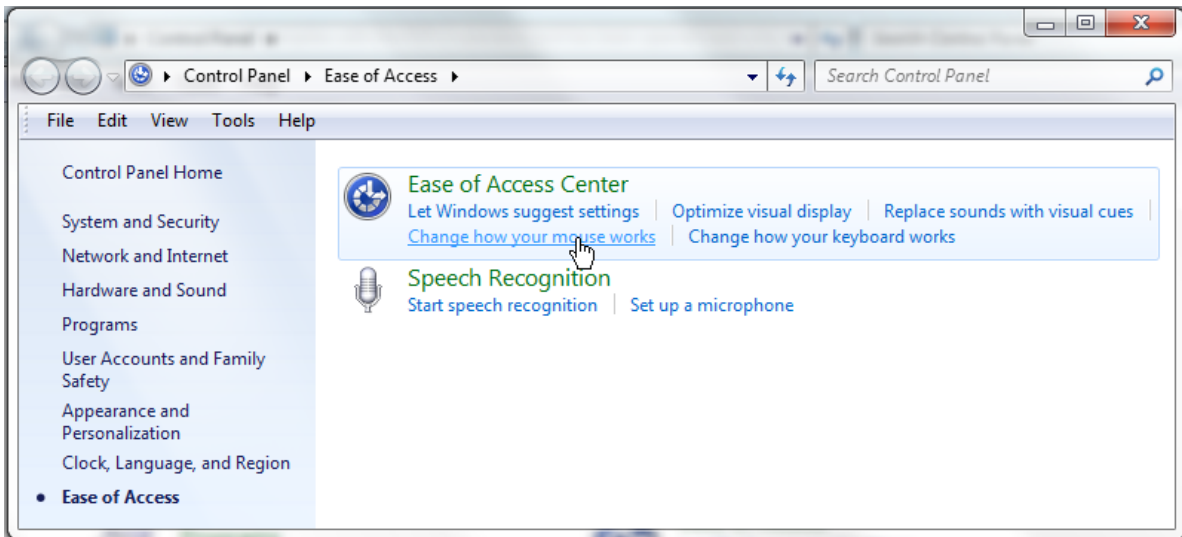
In the Windows menu select Control Panel



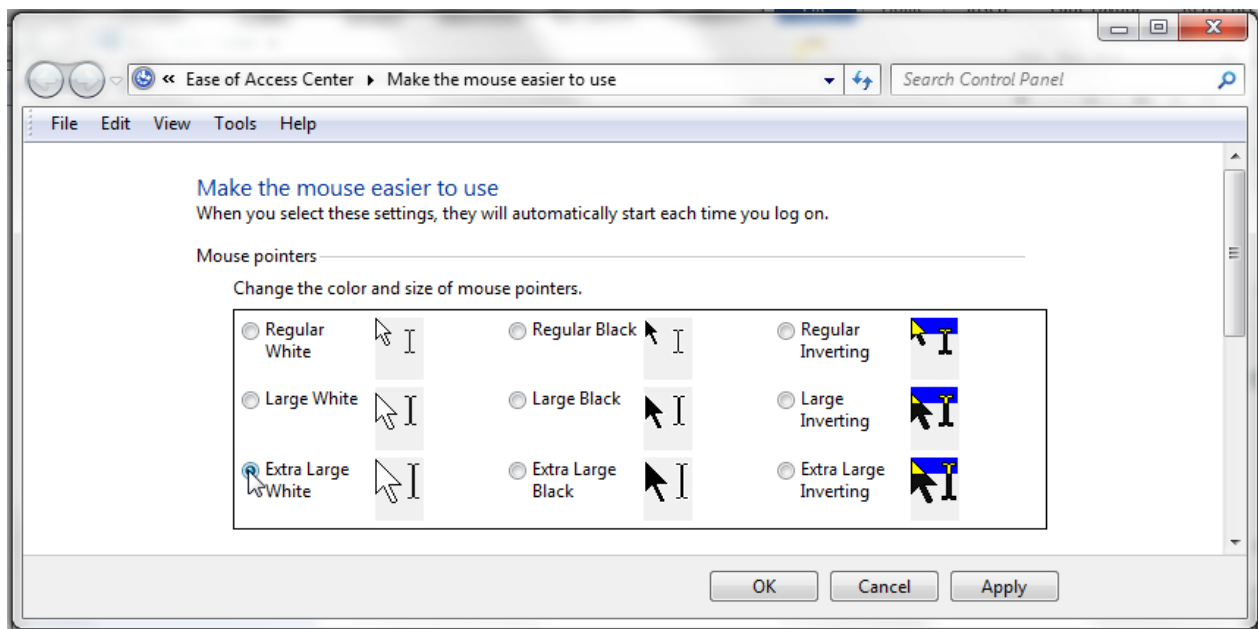
In the Control Panel select Ease of Access.



In Ease of Access select Change how your mouse works.



Then select the size and type of mouse pointer you would like



And click OK.

This should make the mouse pointer more visible and Camera Mouse easier to use.

## WHO IS RESPONSIBLE FOR CAMERA MOUSE?

Camera Mouse was invented by Prof. James Gips (Boston College) and Prof. Margrit Betke (then at Boston College, now at Boston University) in 1999-2000. The initial version was developed by Peter Fleming and then Chris Fagiani, who were undergraduates at Boston College. The initial version made use of a \$1,000 Sony pan-tilt-zoom video camera and a special purpose video capture board.

The first prototype using a USB webcam was developed by Jon Gips.

The Camera Mouse technology was licensed by Boston College to Camera Mouse, Inc., a start-up company based in Texas, in 2004. They developed and sold a webcam-based commercial version of the program for \$395, but couldn't make a financial success of it. The company went bankrupt and the license for Camera Mouse was returned to Boston College.

In 2007 Wajeeha Akram, a graduate student at Boston University working with Prof. Betke, developed a research version of Camera Mouse.

Camera Mouse 2007 was engineered and implemented under contract with Boston College by Donald Green, of Mekinesis, with the functional specifications of the program developed by Jim Gips. Don and Jim and Matt McGowan continued to expand and improve the program in releases of Camera Mouse 2008, 2009, 2010, and 2011. In 2009-2010 Sophia Yen advised us on how to put the whole Camera Mouse project on a strategically sound path. Camera Mouse 2012 was a



complete rewrite. The functional specifications, user interface, and overall project are the responsibility of Jim Gips. Don Green headed the software engineering working with Christine Hsu Nason, his former colleague at OpCode Consulting. Now Don works on the software engineering through Mekinesis, his consulting company. The automatic feature detection routine for locating the eye on start-up is based on work by Yinghao Cai when she was a Visiting Scholar at Boston College. Camera Mouse 2013 was directly based on Camera Mouse 2012. Camera Mouse 2014 was designed to work better with Windows 8 and 8.1. Camera Mouse 2015 added some requested options (Clicking Recovery Time, Center on Alt key press) and was designed to work with Windows 10 as well as past versions of Windows. In 2015, Erin O’Keefe, a student at Boston College, became our Social Media Director and is responsible for the [Camera Mouse Facebook page](#). Camera Mouse 2016 adds some features requested by users.

Our efforts currently are supported by gifts from the Philanthropy Committee of Mitsubishi Electronic Research Labs (MERL) and Mitsubishi Electric America Foundation, for which we are most grateful. Boston College is most generous in its continuing support.

## QUESTIONS OR SUGGESTIONS?

Prof. James Gips  
Fulton Hall 460  
Boston College  
Chestnut Hill, MA 02467

[cs.bc.edu/~gips](http://cs.bc.edu/~gips)  
[gips@bc.edu](mailto:gips@bc.edu)

Please see the website at [cameramouse.org](http://cameramouse.org) for more information about Camera Mouse and for information about programs that can be used about Camera Mouse and for answers to questions that may not be answered in this manual.

The Facebook page at <https://www.facebook.com/cameramousepage> has many photos. It is a good way to keep current with Camera Mouse and to share your experiences with Camera Mouse.

Thank you for using Camera Mouse!